



Building Sustainable Cities: The Singapore Experience

Speaker
Mah Bow Tan
Minister for National Development, Singapore



ISOCARP Congress
Portugal, 20 October 2009



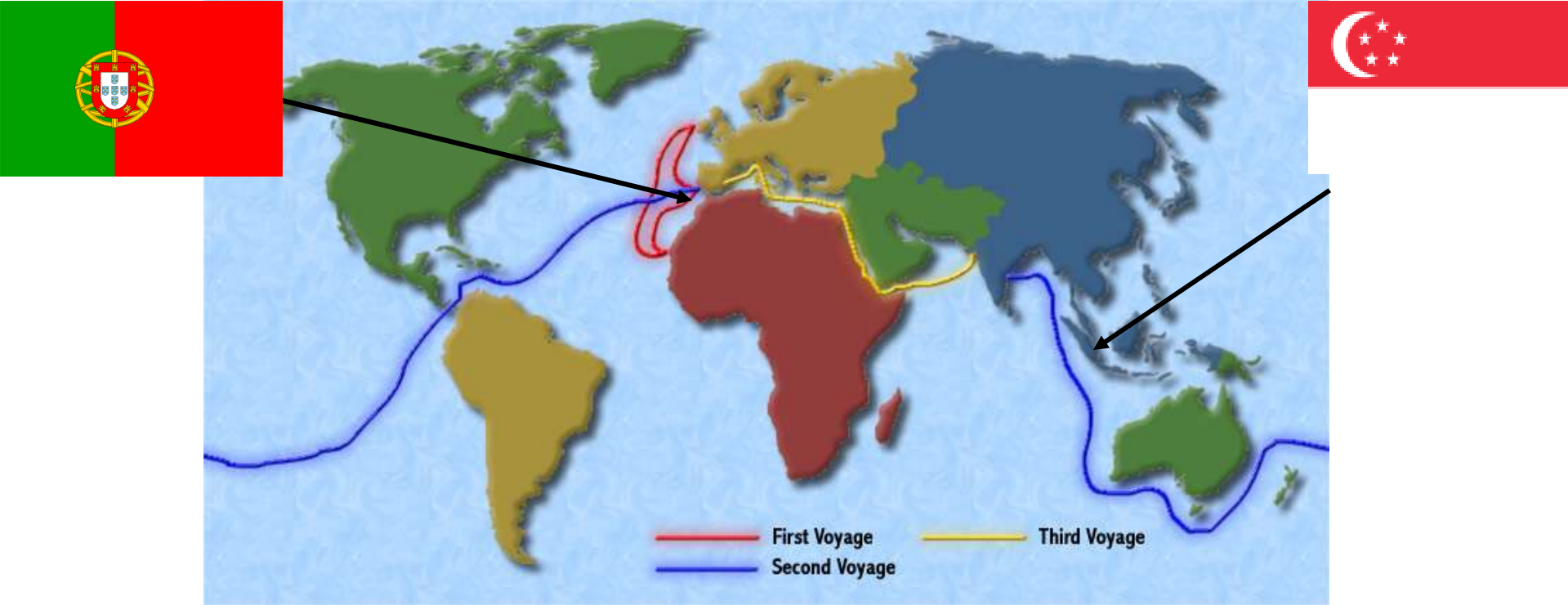
Singapore: Our Unique Circumstances



	Singapore	Lisbon Metropolitan Area
Land Area	707 sq km	2,957 sq km
Population	4.99 mil	2.6 mil
Population density	7,058 pax/ sq km	895 pax/ sq km

SG is 4x smaller but 8x more dense

Our historical links with Portugal



Cities and Sustainable Development



Urban population grows exponentially

UK



China



US



India



Medina

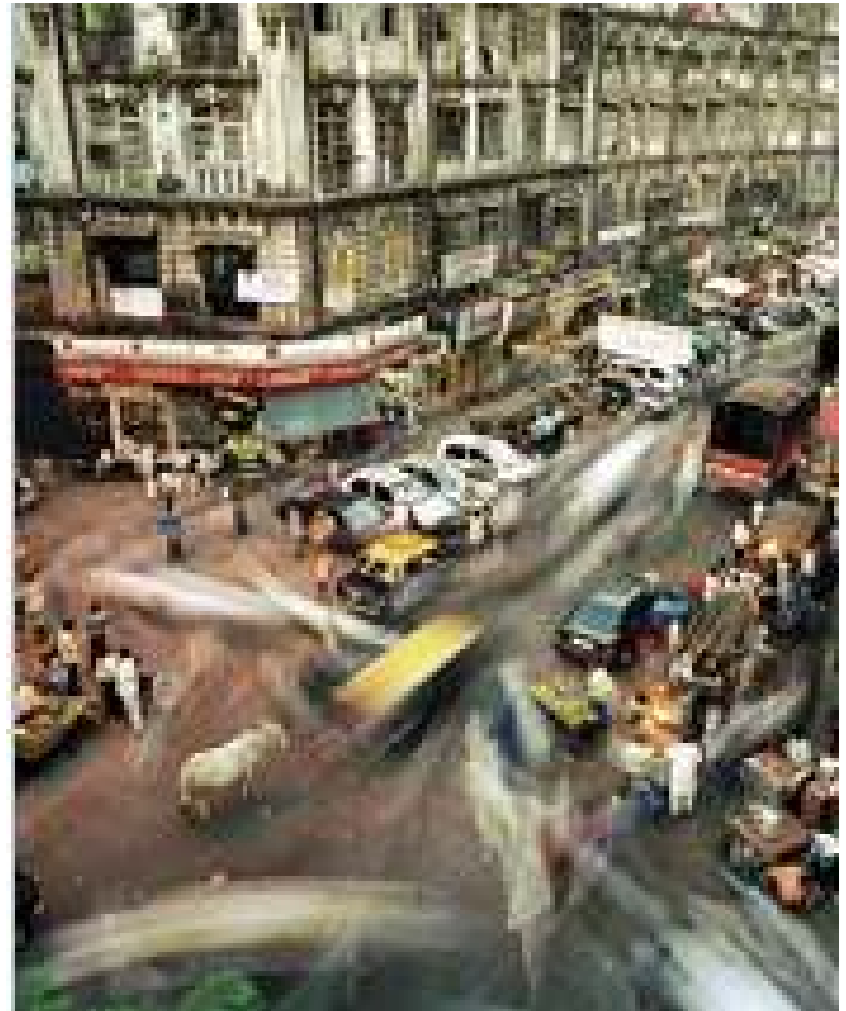


Australia

Tackling the urban challenges in Cities

- Half of the world's population
 - Consume about 75% of the world's energy
 - Emit about 80% of the world's green house gases

- *"Cities and Climate Change Initiative: Conference Report, Oslo, 17 March 2009", Opening Statement by Dr Anna Tibajuka (Executive Director, UN Habitat)*



Cities bring new solutions through innovation for a Sustainable Future



Sustainable Singapore



Needs of our city



HOUSING



RECREATION

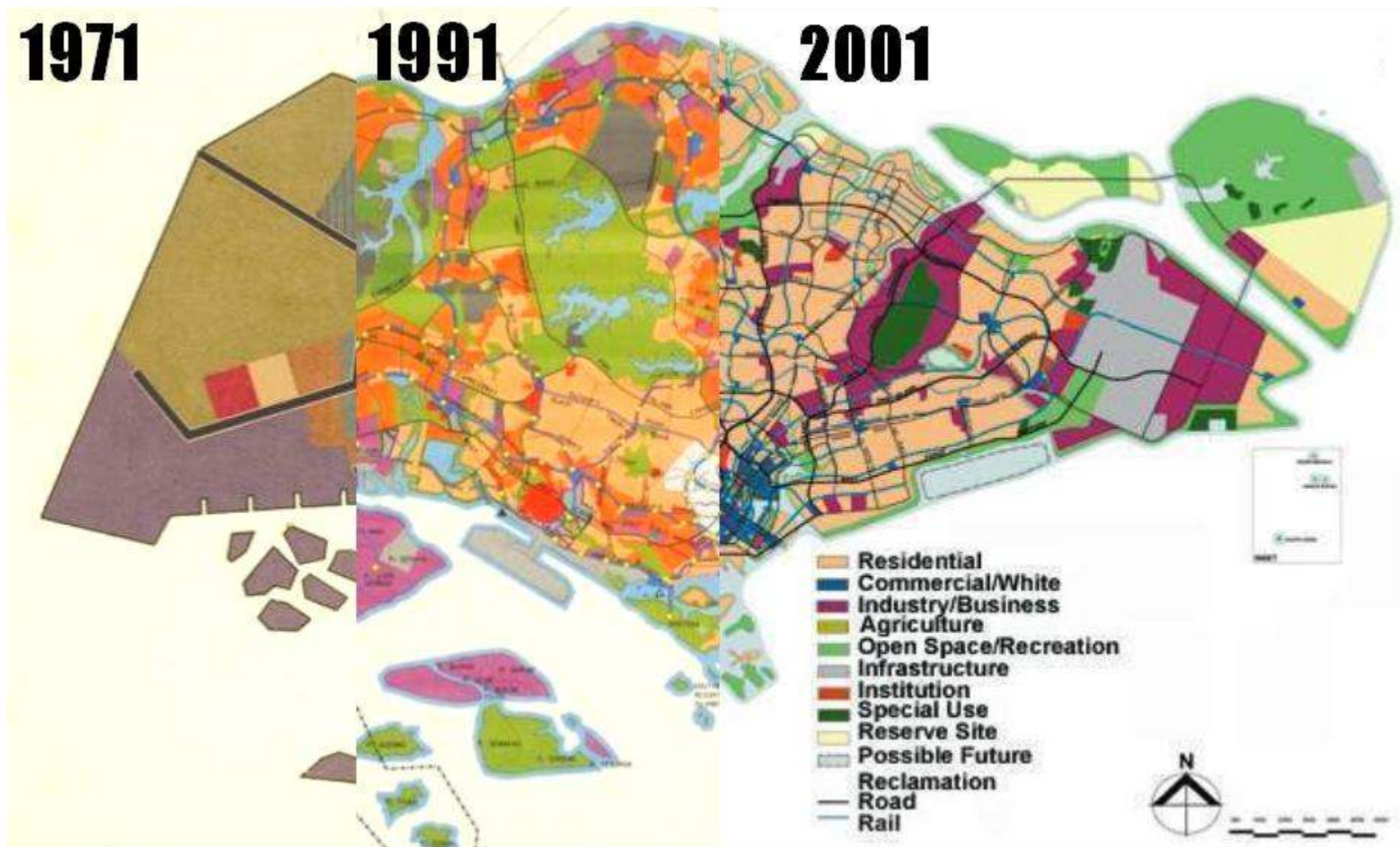


WATER NEEDS



INDUSTRY

Long Term, Integrated Planning through Concept Plan



Industrialize in a sustainable way



Jurong Island

Diversified water sources





Living Coral Reefs

The vast shore of Pulau Semakau is fringed by a marvellous reef teeming with living corals in a bewildering variety of colours and shapes.

World coral cover growing about 4-5cm a year. Based on size alone, some of our reefs could be hundreds of years old.



Singapore HAS world-class reefs!
Singapore has almost half the number of species of coral found at the Great Barrier Reef. Those one reef are a mere 0.015% of it.

NewScientist

Garbage of Eden

Semakau Landfill

Strict Pollution Controls on Industries



Invest to maintain high environmental quality

Transport



Solar



**High
Environmental
Quality**

Green and blue spaces



Clean Tech



A Lively and Liveable Singapore



Reducing Carbon Footprint of our City

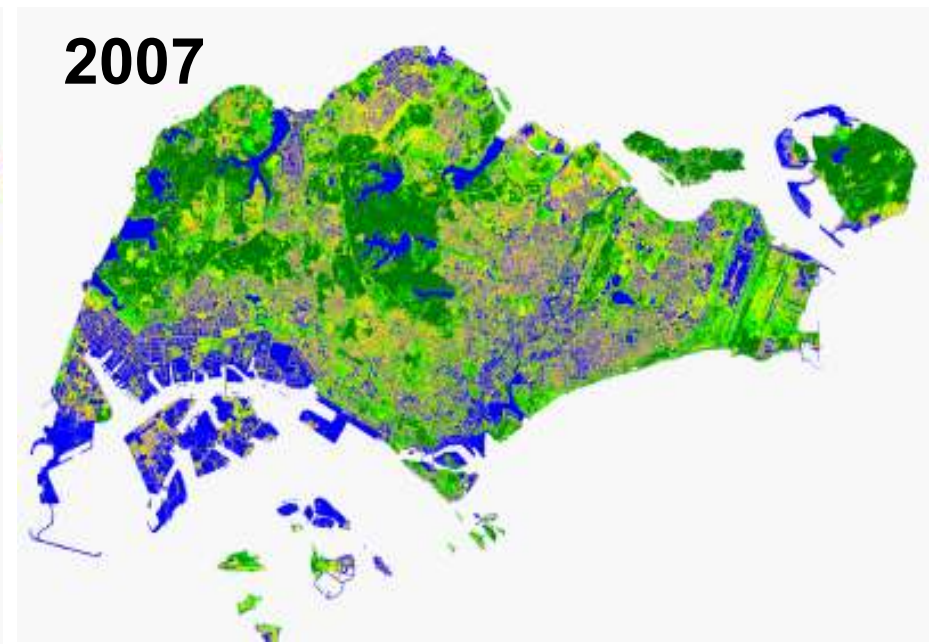
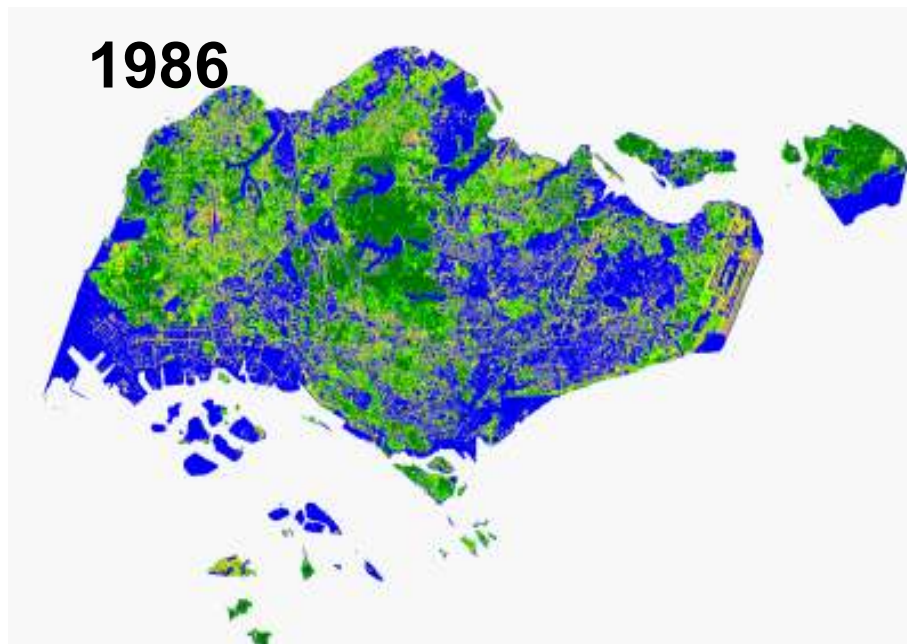


Preserve and intensify greenery in our city



Growing our Green Cover

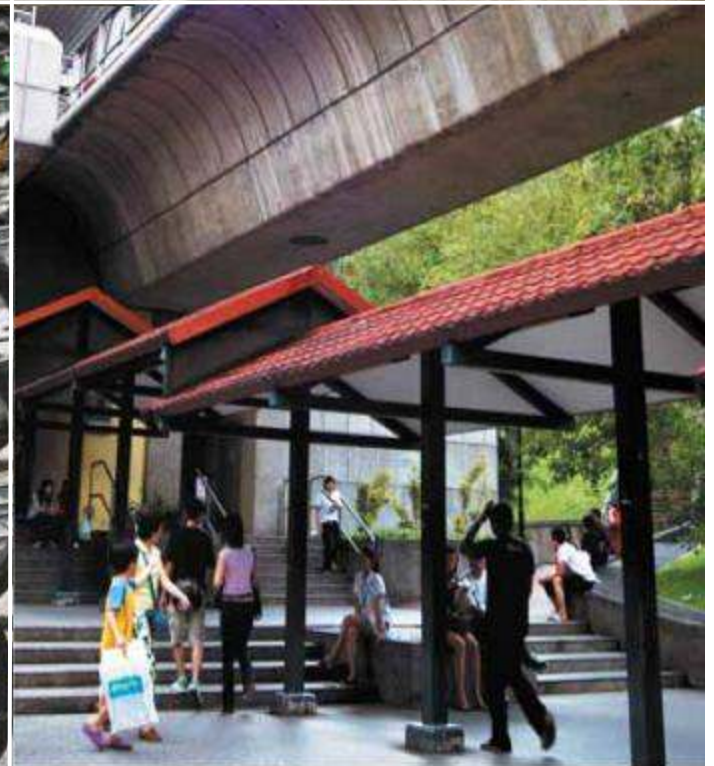
Between 1986 and 2007, despite a **68%** population growth from 2.7 mil to 4.6 mil...Our **green** cover grew from **35.7% to 46.6%**.



Transport Connectivity



Encourage Public Transport, Cycling and Walking



A Living Lab: Sustainable Districts & Urban Planning

Marina Bay



Eco-Precinct: Designing for Green

Punggol



Next generation Eco-Living



- **Environmentally friendly design features**



- **Cycling network to encourage healthy lifestyle**



- **Harness solar energy**



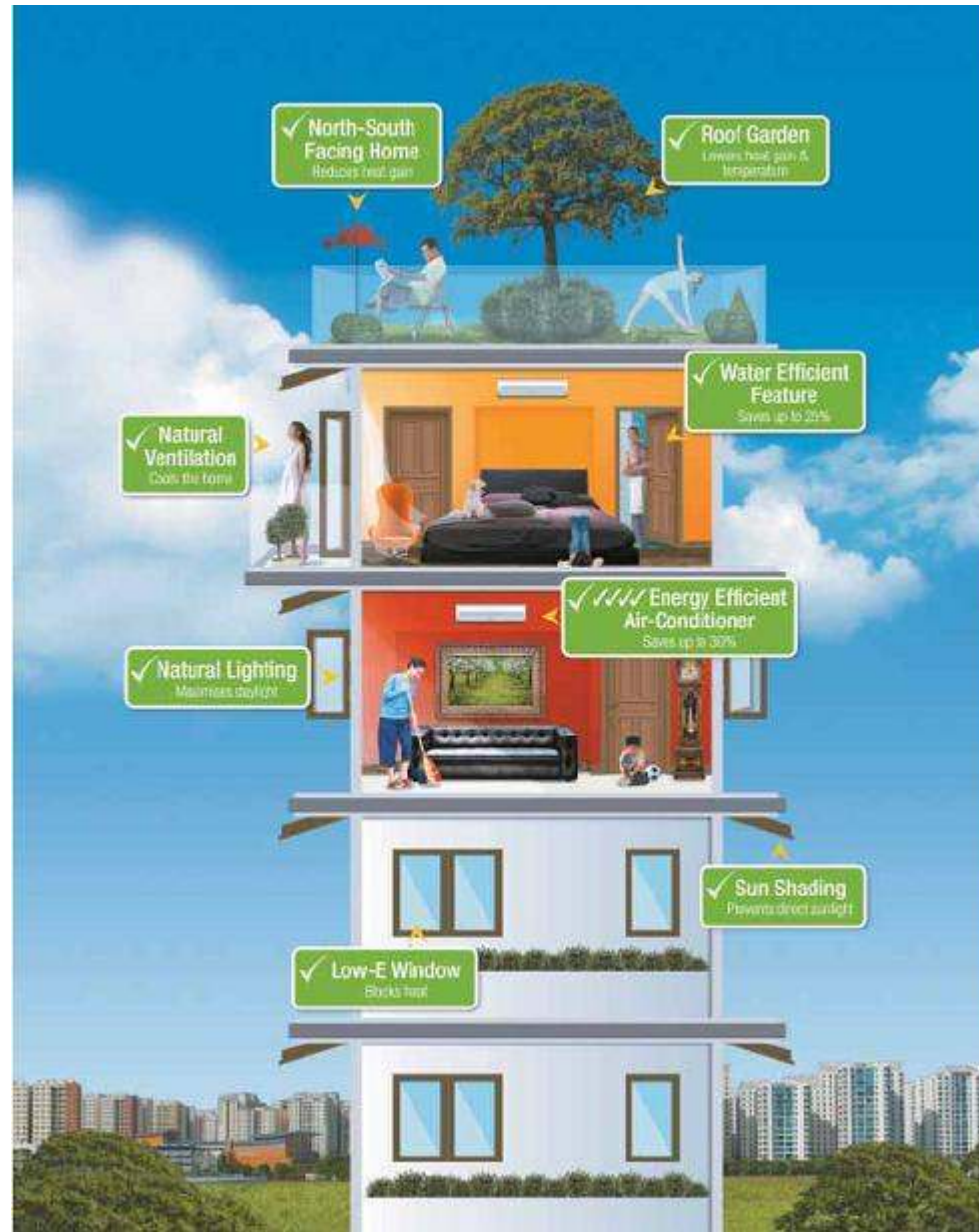
- **Extensive greenery to reduce heat gain**

Improve Energy Efficiency by 35% by 2030

Jalan Bahar
CleanTech Park



Green Mark Buildings



Features of a Green Mark Building

Adopt energy efficient designs, processes and technologies



Empower Consumers



\$30mil solar test-bedding project



Engaging the Community to adopt Low Carbon Lifestyle



Educate and Engage the Youth



Partnership across Borders

Sino-Singapore Tianjin Eco-City

A thriving city which is socially harmonious, environmentally-friendly and resource-efficient – a model for sustainable development



CENTRE for
LiveableCities
SINGAPORE



Lee Kuan Yew World City Prize



Co-Organised by

Supported by

Prize Sponsor

URBAN REDEVELOPMENT AUTHORITY

CENTRE for Liveable Cities SINGAPORE

MND

World Cities Summit

Keppel Corporation

The bottom section of the slide features a stylized world map composed of small circles. The map is divided into three main regions: North America (top left), Europe/Africa (middle), and Asia/Australia (right). The circles are colored in shades of blue and grey, with some circles highlighted in gold to represent specific cities or regions.



THANK YOU

