



Intensive Training Program for Young Planning Professionals

23 January - 3 February
UPC - Abu Dhabi
2011



ISOCARP

YPP Training Program

مجلس أبوظبي للتخطيط العمراني
ABU DHABI URBAN PLANNING COUNCIL



Intensive Training Program for Young Planning Professionals

Week 1

- 5 times one day seminar
- ISOCARP - Coordination Paco Perez (Vice President) - Mexico
- Other coordinators (Malaysia, Serbia, Turkey, UAE – Sjarjah, USA)

Week 2

- International 5 day Workshop
- ISOCARP - Coordination Zeynep Enlil (Vice President) – Turkey
- 24 workshop delegates (16 UAE and 8 ISOCARP YPP)



ISOCARP – global network:

- Founded 1965;
- 750 members;
- Over 50 countries;
- Six continents;
- Planning Practice / Planning research / Academia;
- Annual congress / UPATS / Training Events / Publications.



Intensive Training Program for Young Planning Professionals

UAE delegates

Ahmed Al Kuwati	UPC
Suad Al Thehli	UPC
Mariam Al Ameri	UPC
Hamdan Al Mulla	UPC
Sultan Echtibi	UPC
Muna Al Shehhi	UPC
Mansour Al Harbi	UPC
Ahmed Al Hamed	UPC
Ahmed Al Zaabi	UPC
Mahmoud Al Mahmoud	UPC
Mohamed Al Hammadi	UPC
Omar Al Suwaidi	UPC
Jaber Al Dharif	DOT
Muath Al Mazrooei	DOT
Mohamed Al Ameri	ADM
Maha Al Rumaithi	ADM

YPP delegates

Thomas Buhler	France
Madalen Gonzalez Bereziartua	Spain
Zeynep Gunay	Turkey
Niels Kropman	Netherlands
Mira Milakovic	Serbia
Wai Ki Pang	China
Rolf Schuett	Germany/Bolivia
Peter Vanden Abeele	Belgium

Intensive Training Program for Young Planning Professionals

Local Coordinators

Dima Al Souri	UAE
Sonal Parikh	UAE
Olivia Duncan	UAE
Sura Abdelhadi	UAE
Swapnil Patil	UAE

UPC Contact Person

Sally Biggins	UAE
---------------	-----

YPP Coordinators

Peter Jonquiere	Netherlands
F. Brandao Alves	Portugal

Intensive Training Program for Young Planning Professionals

Training Goals

Contemporary urbanism + practical knowledge

WK 1	Exposure	acquire knowledge
WK 2	Excercise	applying new knowledge
	Experience	international professional exchange



Intensive Training Program for Young Planning Professionals

MUSAFFA



as training ground

Group Vision, Strategy, Implementation Framework

Maha Alrumaithi

Mansour Al Harbi

Mahmoud Al Mahmoud

Ahmed Al Zaabi

Zeynep Gunay

Niels Kropman



ISOCARP

مجلس أبوظبي للتخطيط العمراني
ABU DHABI URBAN PLANNING COUNCIL



Musaffah 2030

Visioning the future

Group D part 1

Vision, Strategies, Implementation & Framework



ISO CARP

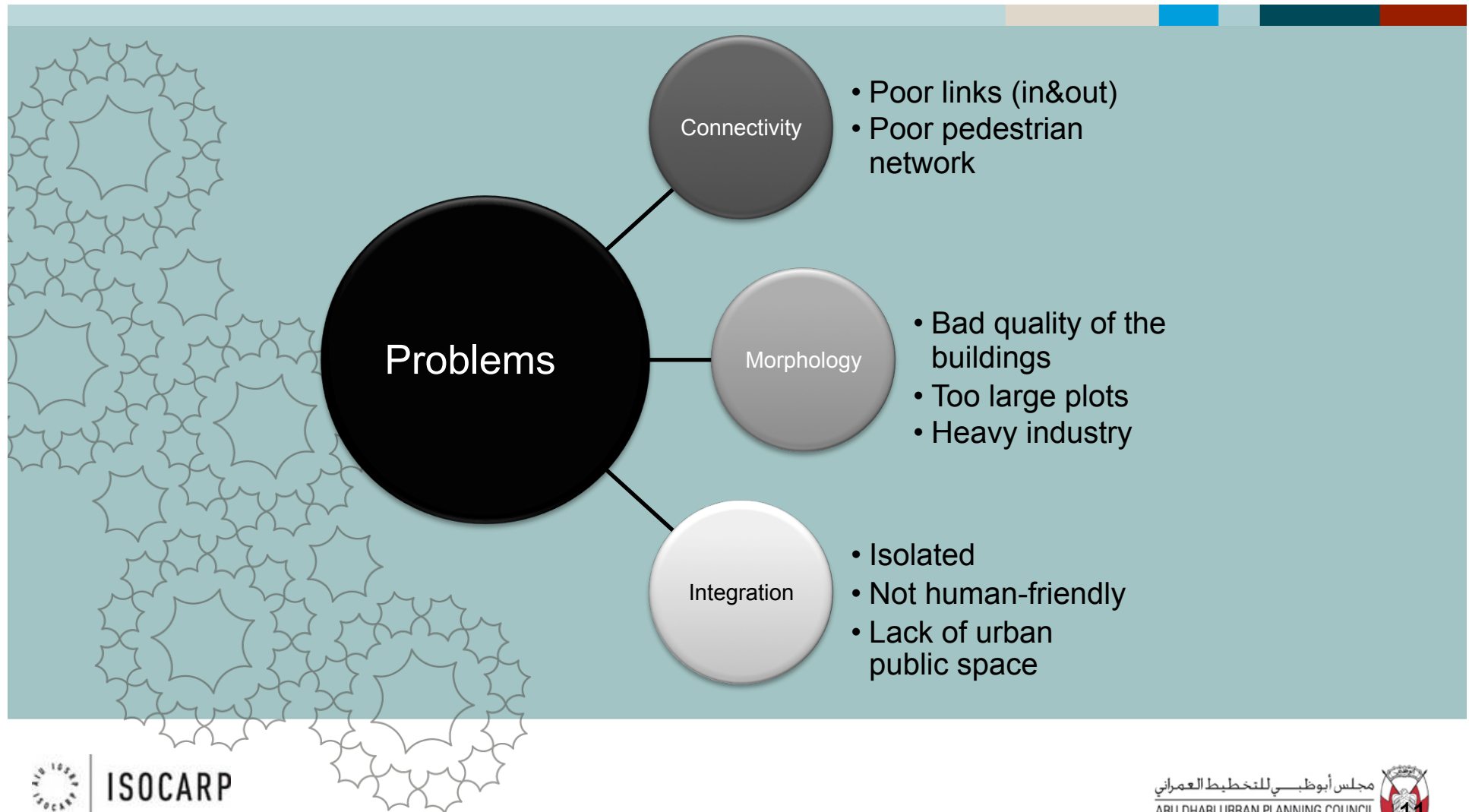
مجلس أبوظبي للتخطيط العمراني
ABU DHABI URBAN PLANNING COUNCIL



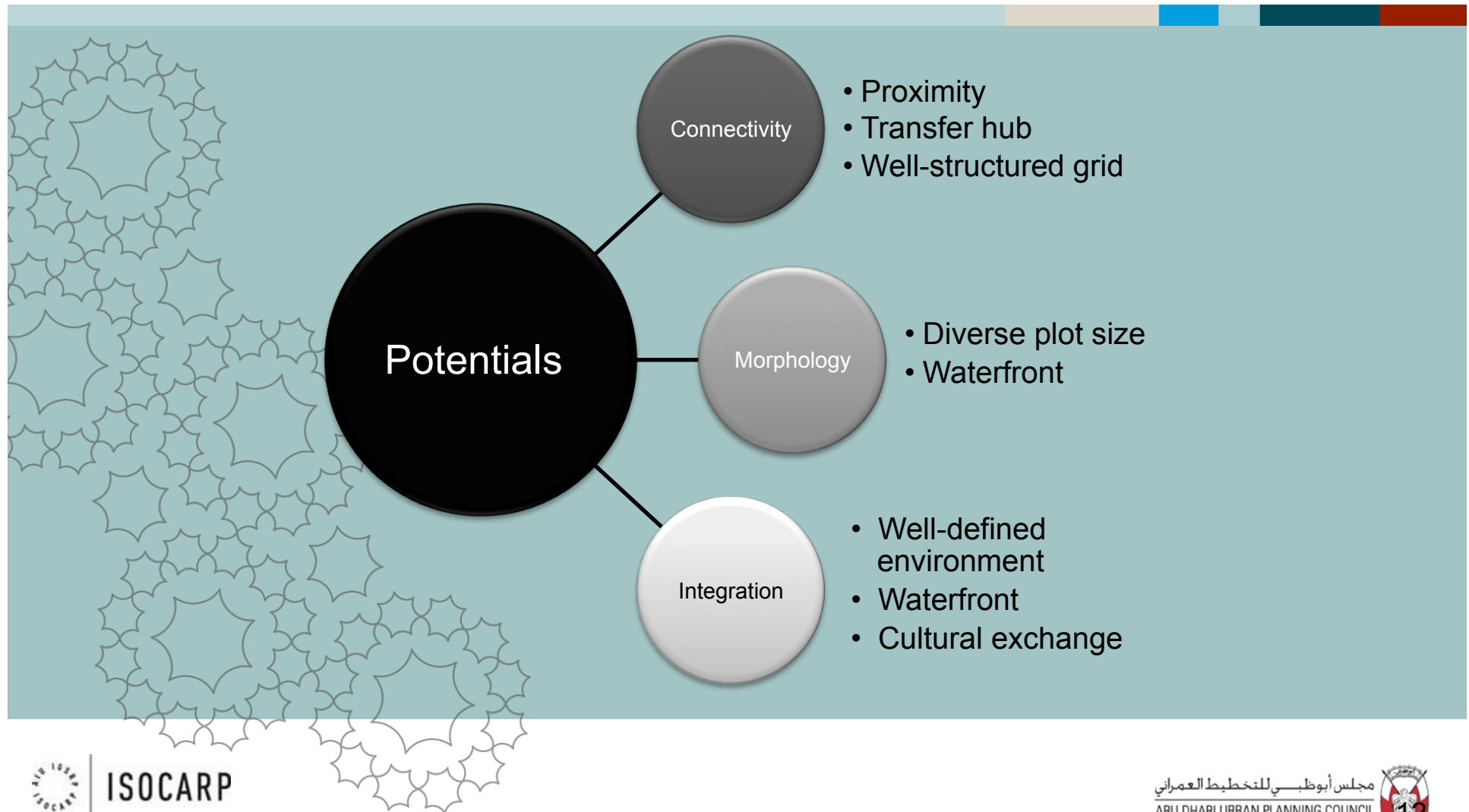
Introduction

- **Where are we?**
- **Where do we want to be?**
- **How do we go there?**

Where are we?



Where are we?



Where do we want to be?

- **Vision**
- **Key guiding principles**
- **Strategies & objectives**

Where do we want to be?

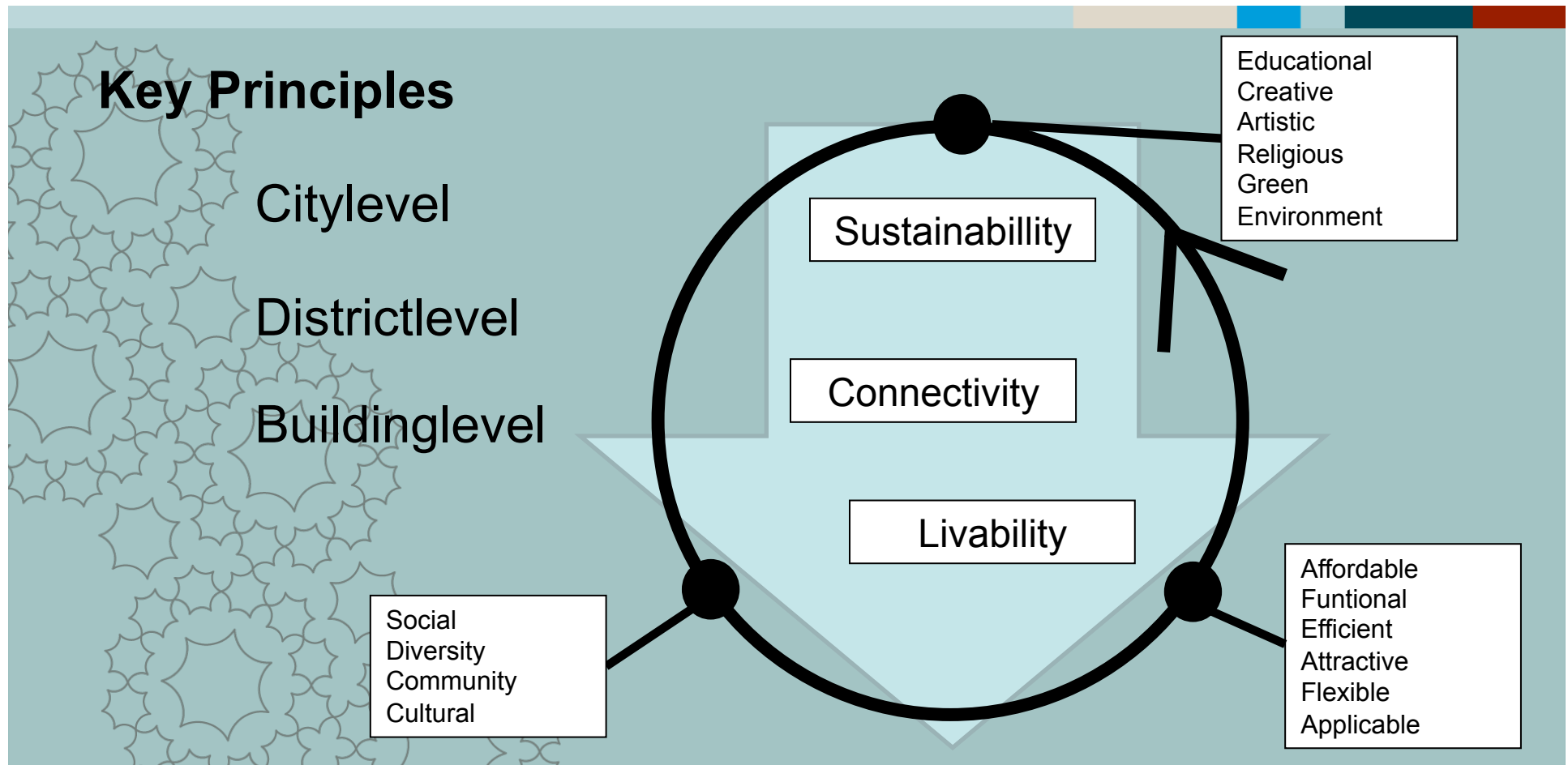
Vision

A decorative geometric pattern consisting of interlocking star and floral shapes, rendered in a light teal color, is positioned on the left side of the slide.

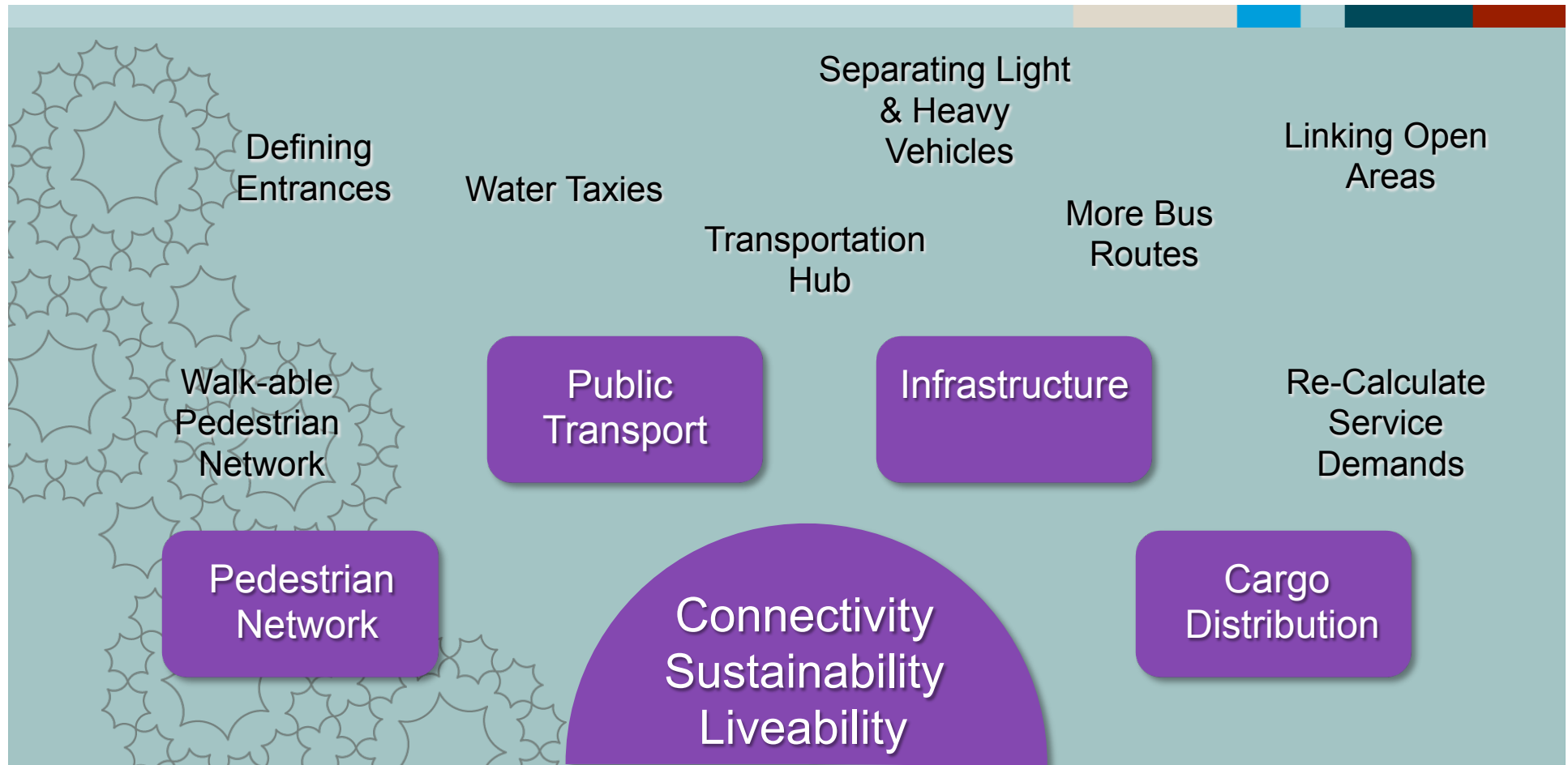
**Abu Dhabi and Musaffa,
HAPPY TOGETHER!**

Where do we want to be?

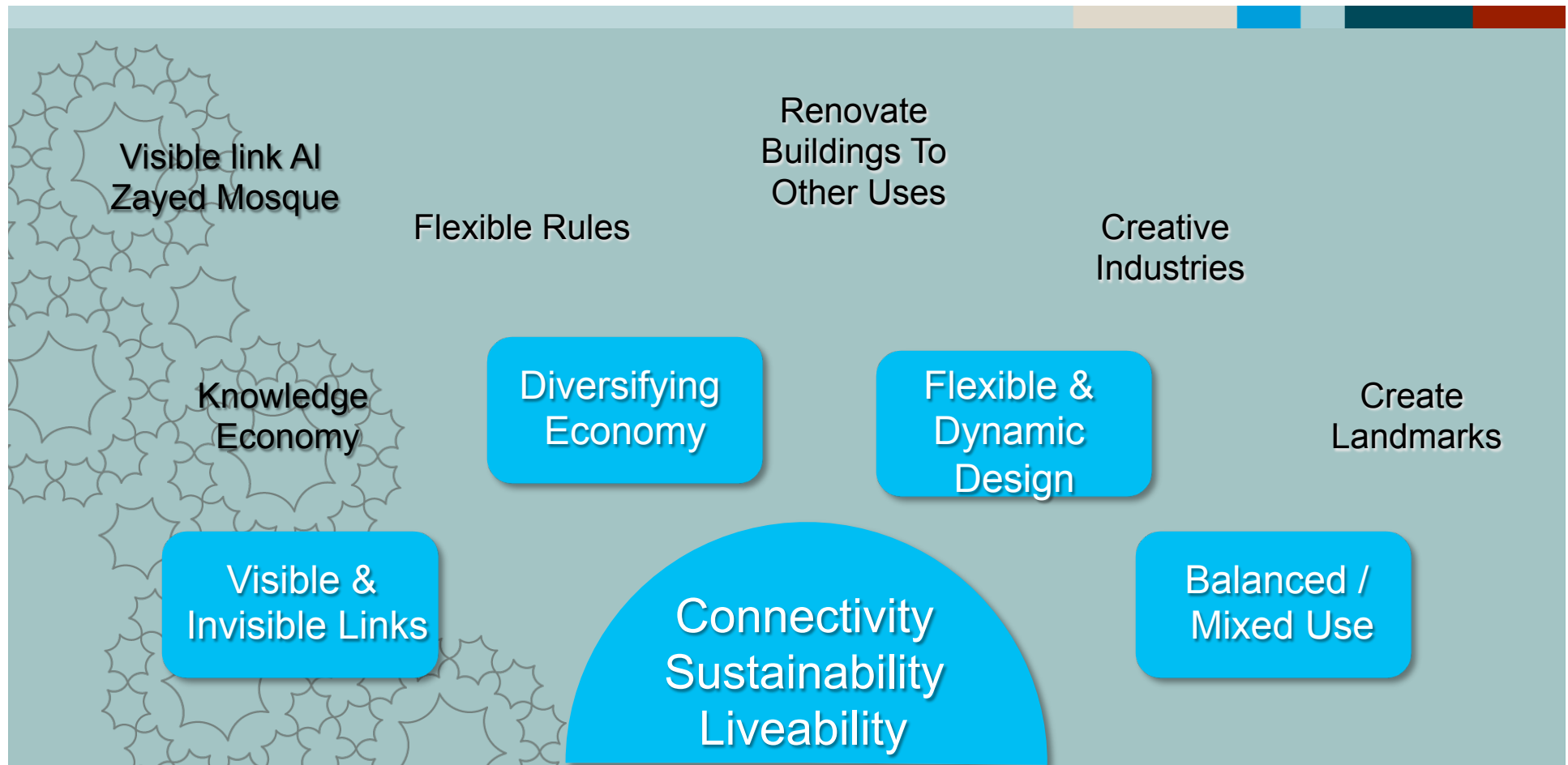
Key guiding principles



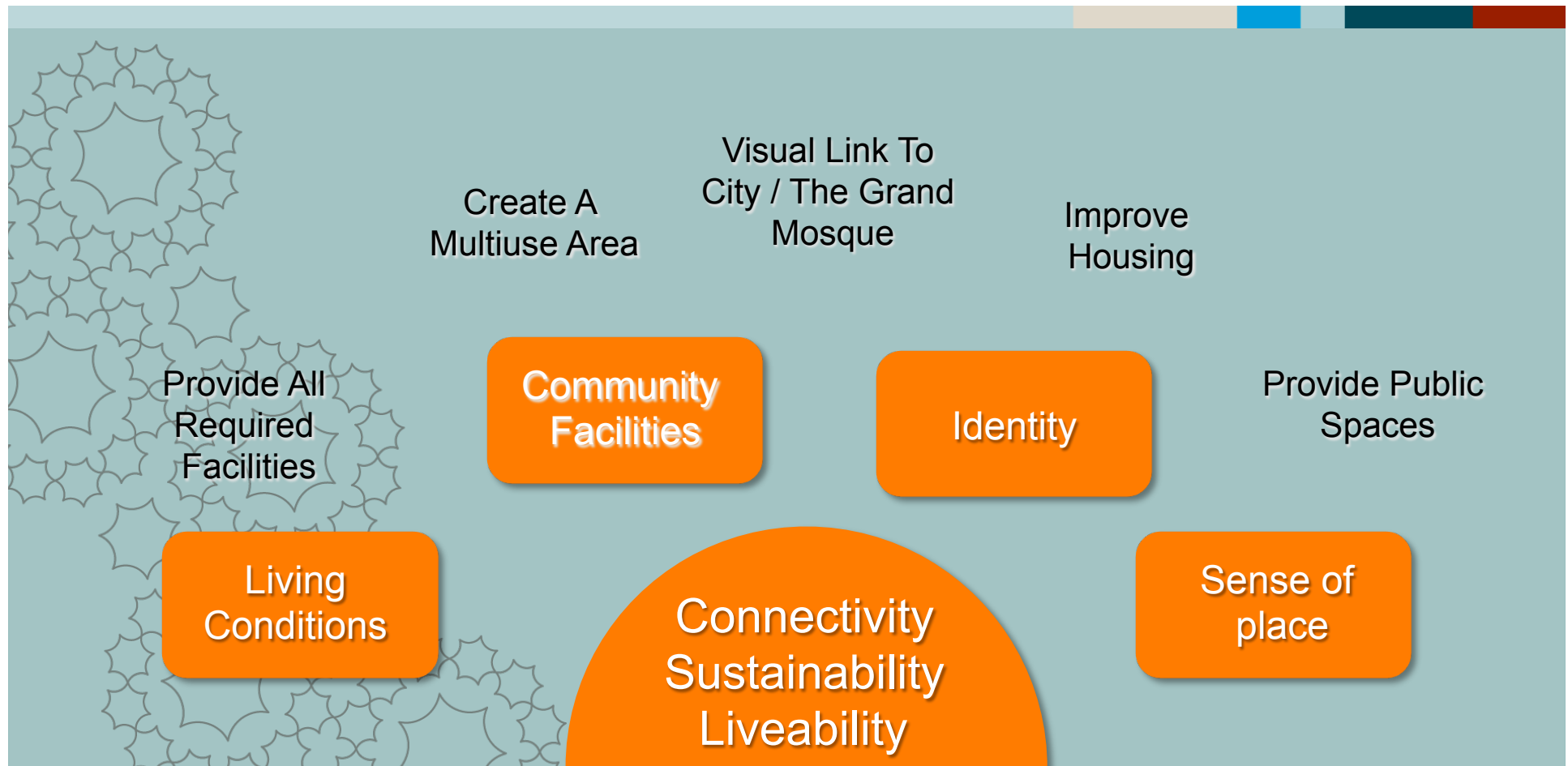
Connectivity: A Connected Musaffah



Morphology & Activities: A Livable Musaffah



Social Integration: An Inclusive Musaffah





Group A Infrastructure, Connectivity, Links & Transportation

Mohamed Al Hammadi

Ahmed Al Hamed

Muath Al Mazrooei

Penny Wai Ki Pang

Rolf Schuett

Souad Al Thehli

Musaffah 2030

Group A

Infrastructure, Connectivity, Links & Transportation



Introduction: Transport

Methodology

Analysis: Existing → Future

Scales: UAE ↔ City ↔ District ↔ Sites

Modes: People ↔ Public ↔ Private

Existing Analysis - SWOT

Strengths

City Scale

- + Short distance to most parts of the city

District Scale

- + Proximity to waterfront
- + Adjacent to main spine road "Truck Road"
- + Existing clear grid pattern
- + Self-organised and Non car-dependent communities

Site Scale

- + Long waterfront area

Weaknesses

City Scale

- + Existing congested bridges
- + Inadequate public transport for people
- + Absence of rail-based network for goods

District Scale

- + Limited bus network
- + Inaccessible waterfront areas
- + Car-oriented urban form /street patterns

Site Scale

- + Though weather reduces walkability
- + Weak sense of place, difficult to navigate

Opportunities

City Scale

- + Connect Mussafah to other parts of the city / UAE
- + Suitable for water-based transport
- + Pioneer sustainable transport modes

District Scale

- + Create pedestrian and cyclist-friendly network
- + Demands in public transport

Site Scale

- + Enhancement for pedestrian and cyclist friendly

Threats

City Scale

- + Existing bus network is not wheelchair accessible
- + Worsen pollution if no solutions in place

District Scale

- + Bottle-necks at road junctions
- + Mussafah as an industrial ghetto

Site Scale

- + Inefficient under-ground parking due to water table

Questions

Transport Network

How can Mussafah accommodate new land use and development?

Connection

How can Mussafah be better connected to wider areas?

Accessibility

How can Mussafah and its waterfront can be more accessible?

Less Cars

How can Mussafah be less car-dependent?

Sustainability

What are the sustainable modes of transport for Mussafah?

Implementation

How can these modes be implemented?

Solutions: Objectives

- Estidama;
- Promote sustainable modes of transport;
- Improve accessibility Mussafah;
- Better environments and safety for pedestrians, cyclists and all road users;
- Improve permeability of the waterside areas;
- Urban Straat + Public Realm Design Manual.

Solutions: UAE + City-wide Connection

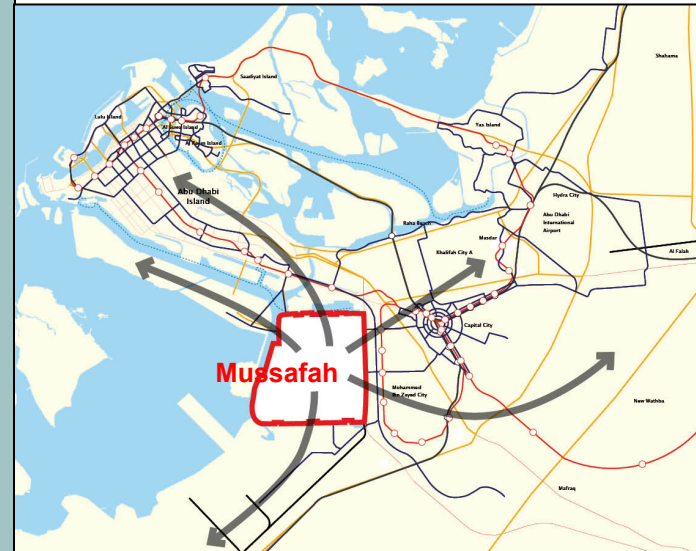
UAE-wide

- Union rail and highways
- Freight and train for goods

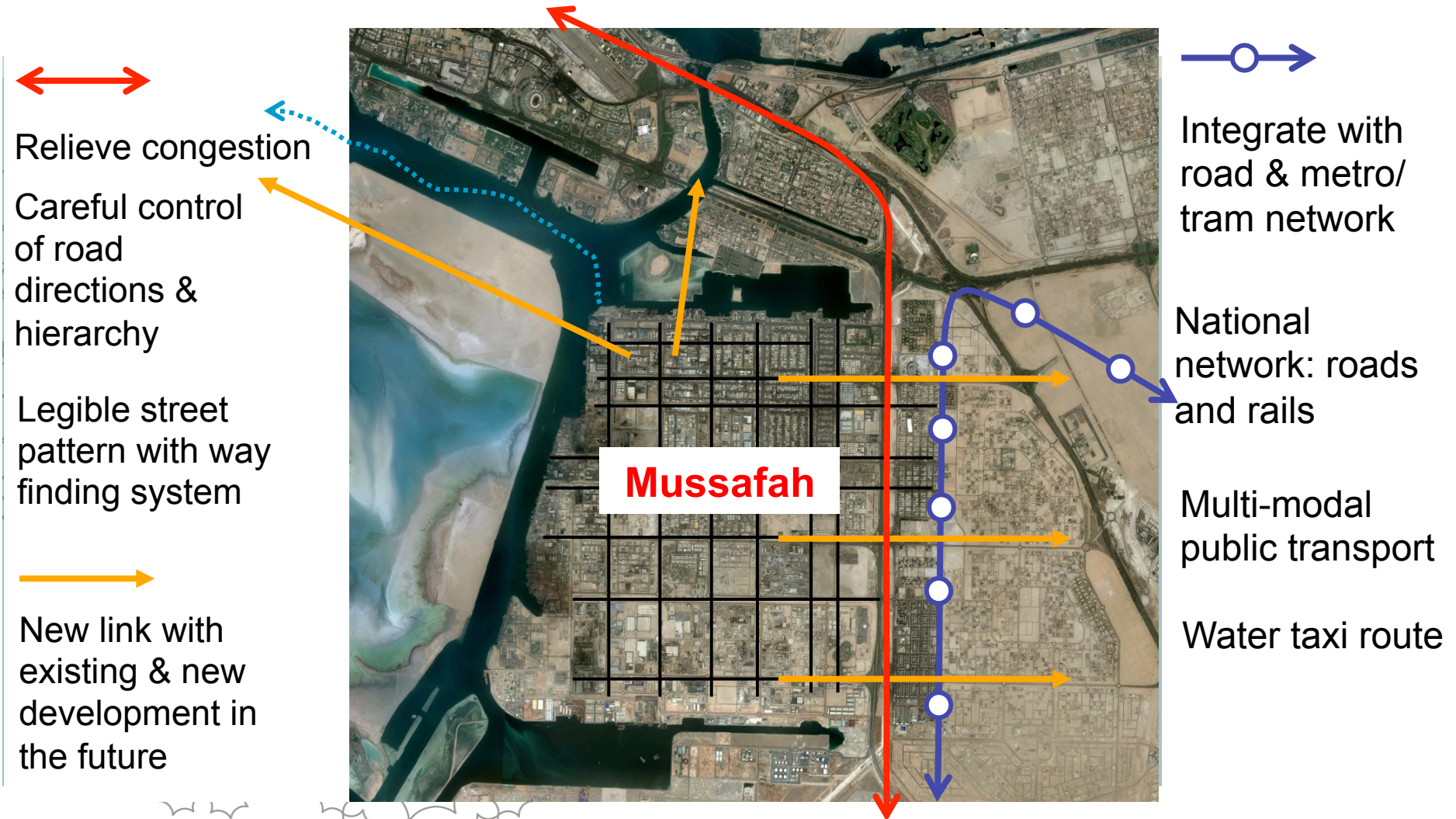


Abu Dhabi-wide

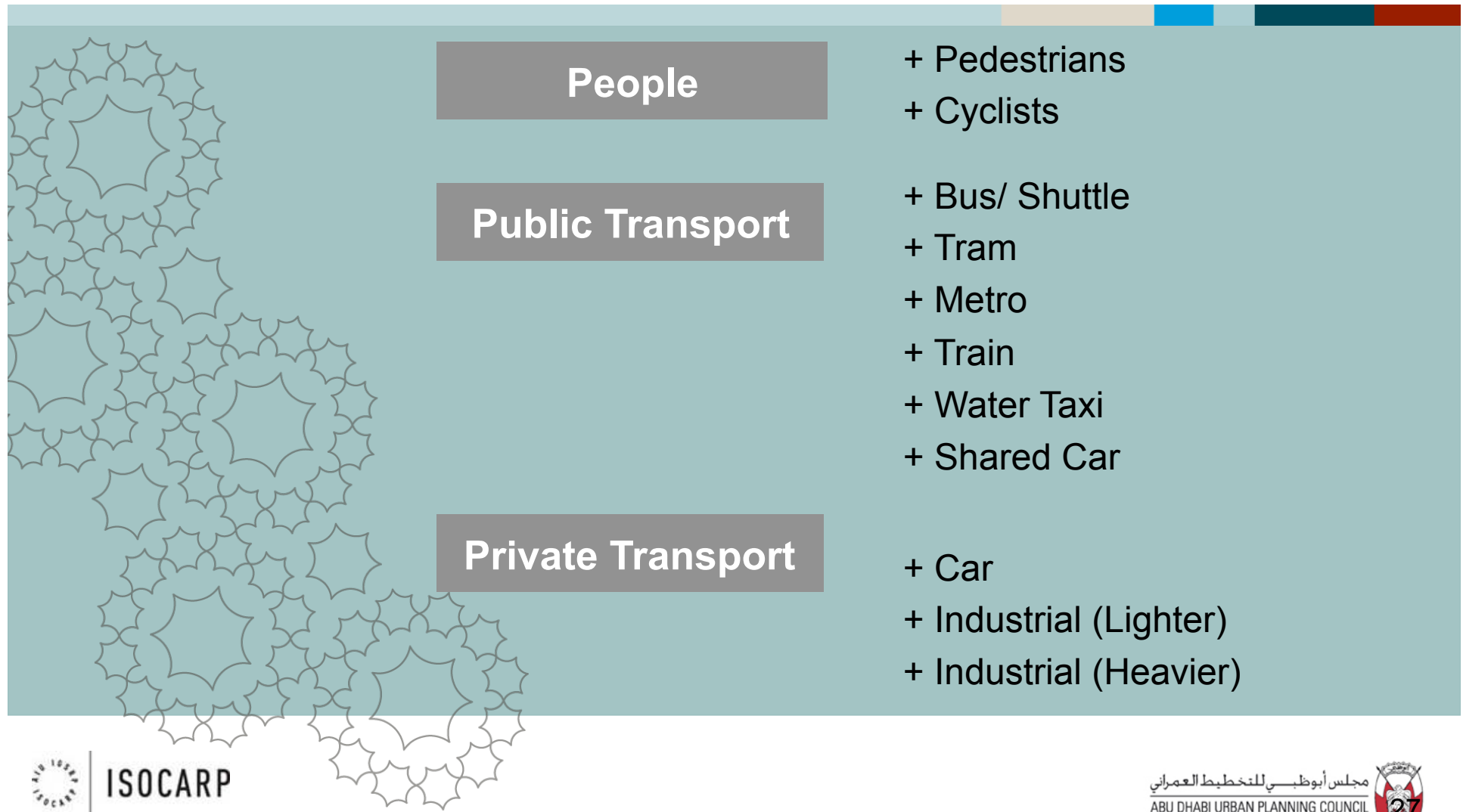
- Connect Mussafah to other parts of the city
- Integrated transport network



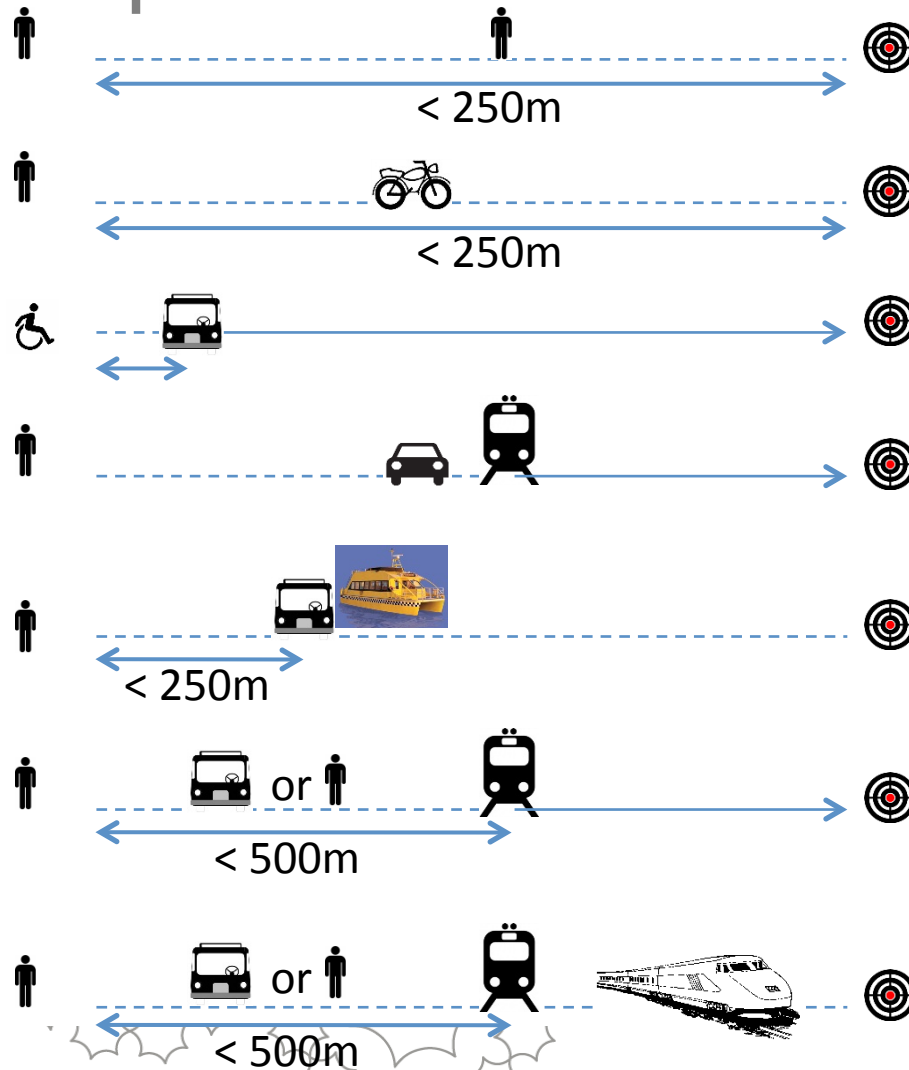
Solutions: Districts + Sites Connection



Modes of Connections



People Connection: Concept



- Promote short distance walk/ cycle
- Urban form and street design easy to navigate
- Mobility for everyone
- Enhance potential of walk/ cycle to bus/ tram stops

People Connection: District Scale



- Clear street pattern for ease of navigation
- Accessible waterfront
- View corridors
- Promote integrated transport

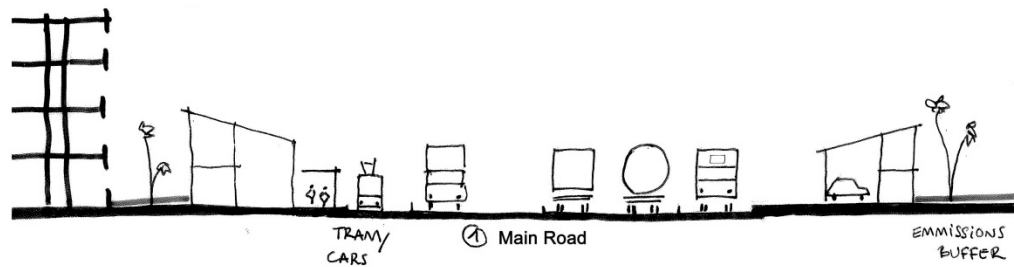


People Connection: Site Scale

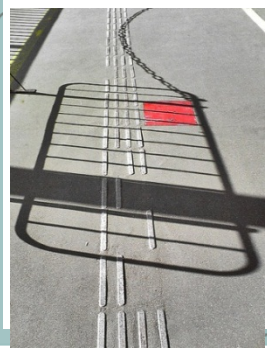
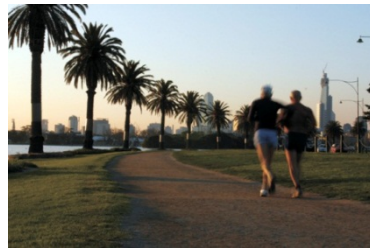
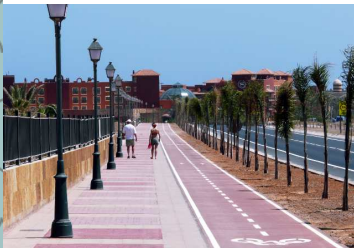


- 1km x 1km block
- Walkable neighbourhoods (less than 250m)
- Improved pedestrian environments, eg, shading
- Residential roads for parking & car sharing points

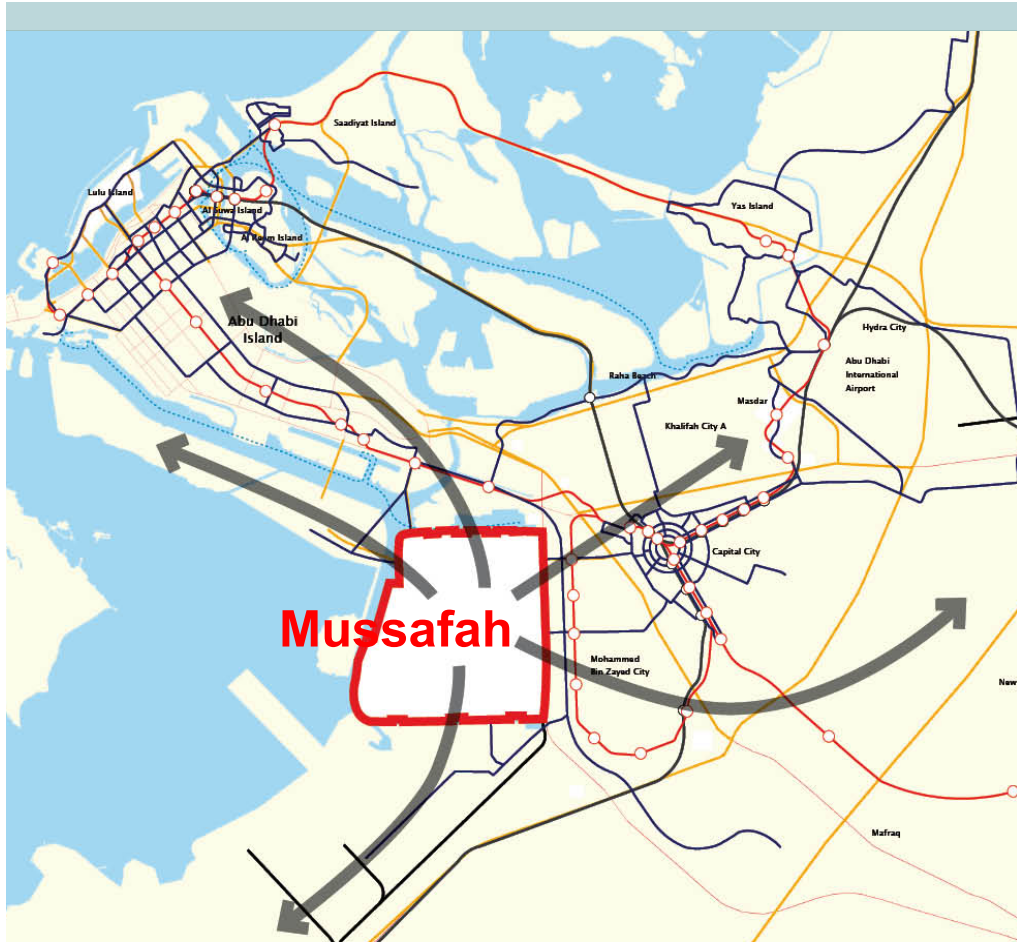
People Connection: Site Scale



- USDM
- Design to improve accessibility and shading
- Street section to connect walking and public transport



Public Transport: Concept



- City/ district/ site scale connections
- Different modes
- Different speeds
- Inter-changable

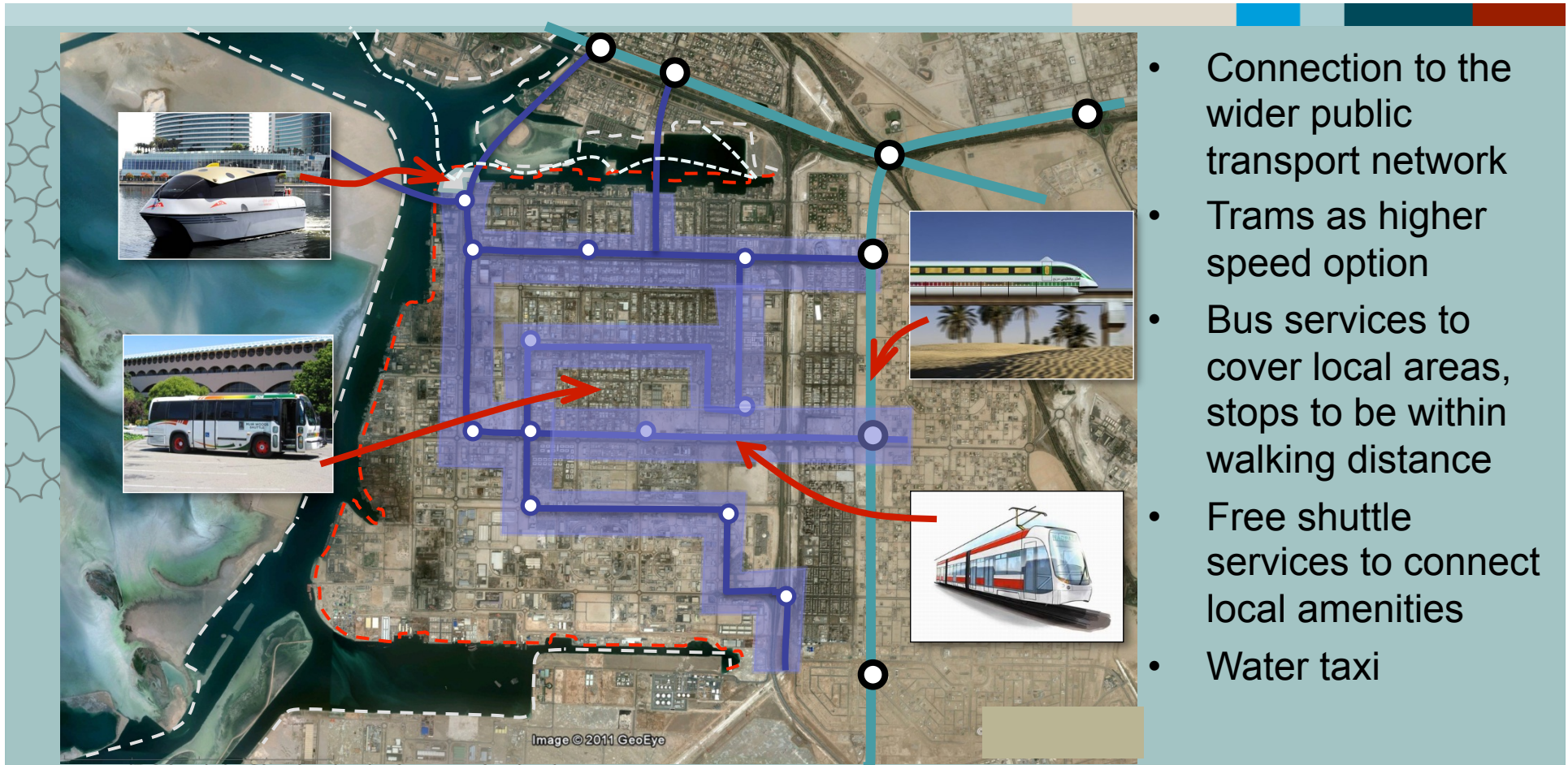
Public Transport: City-wide Connection



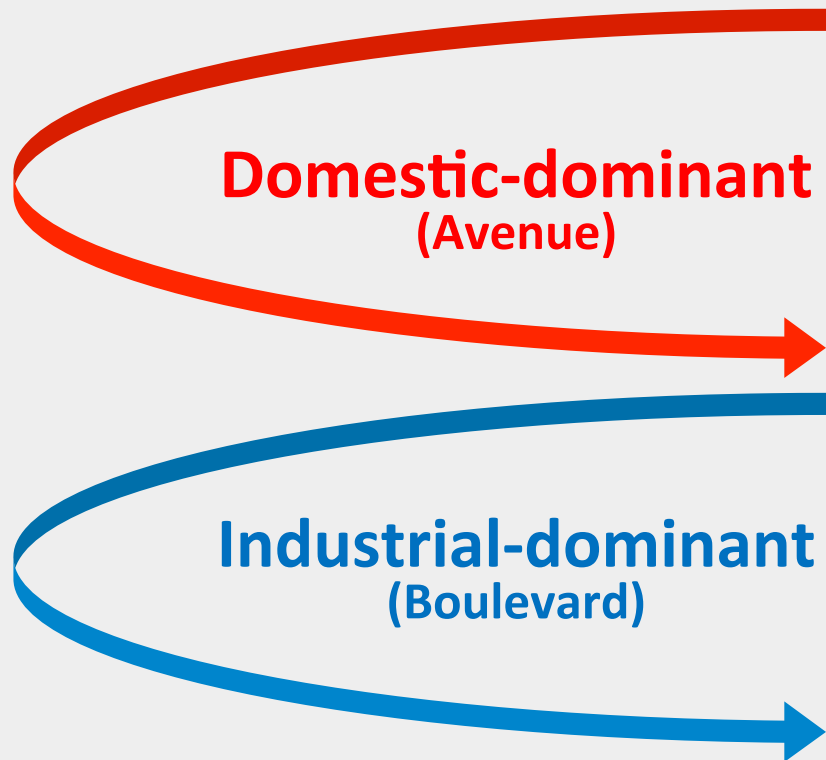
- High integration amongst different modes of public transport
- Eg. Trams/ buses from Mussafah connect to Metro and wider network

Public Transport: District Scale

- Connection to the wider public transport network
- Trams as higher speed option
- Bus services to cover local areas, stops to be within walking distance
- Free shuttle services to connect local amenities
- Water taxi

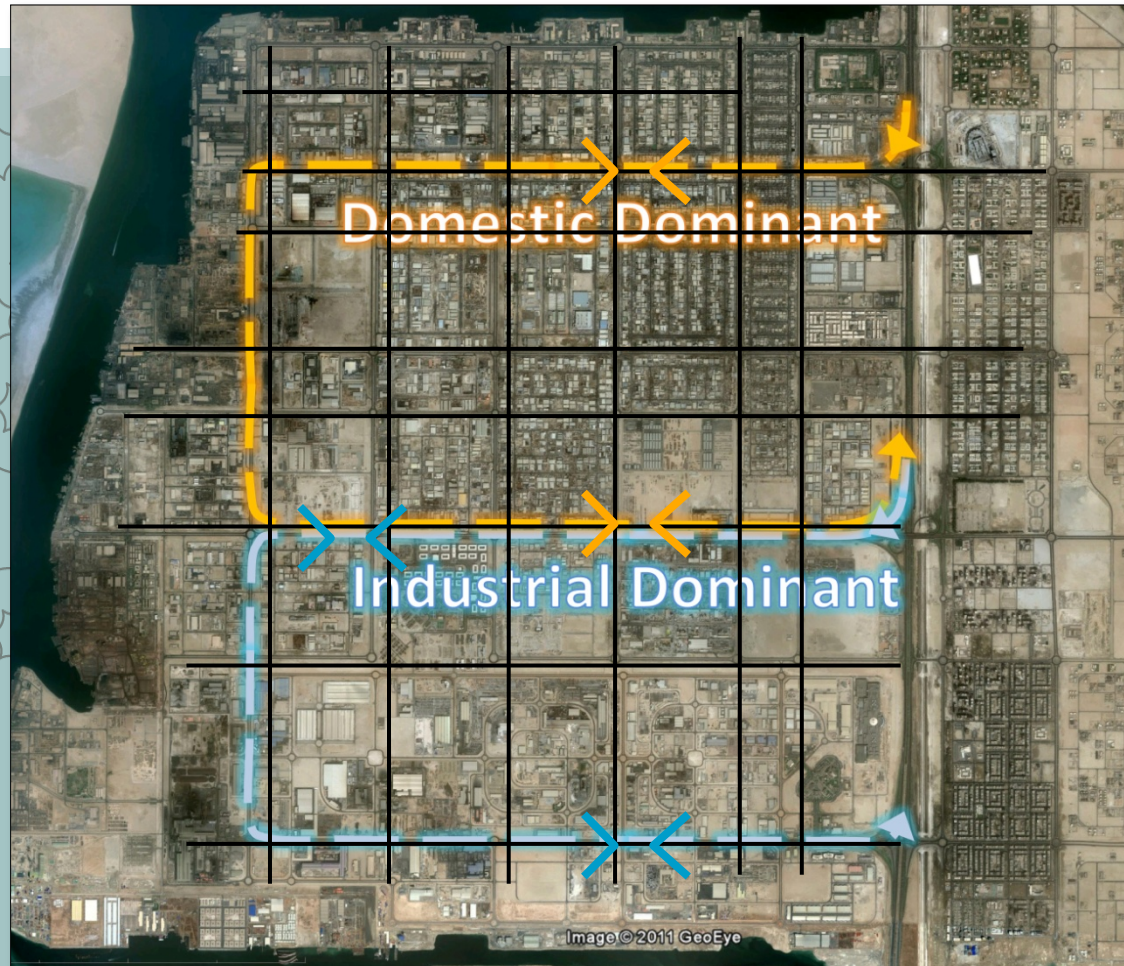


Private Traffic: Concept



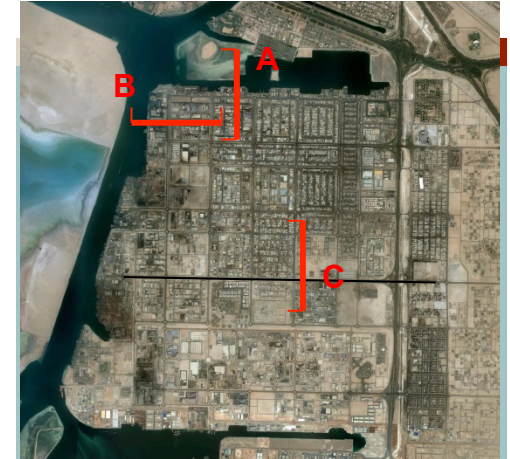
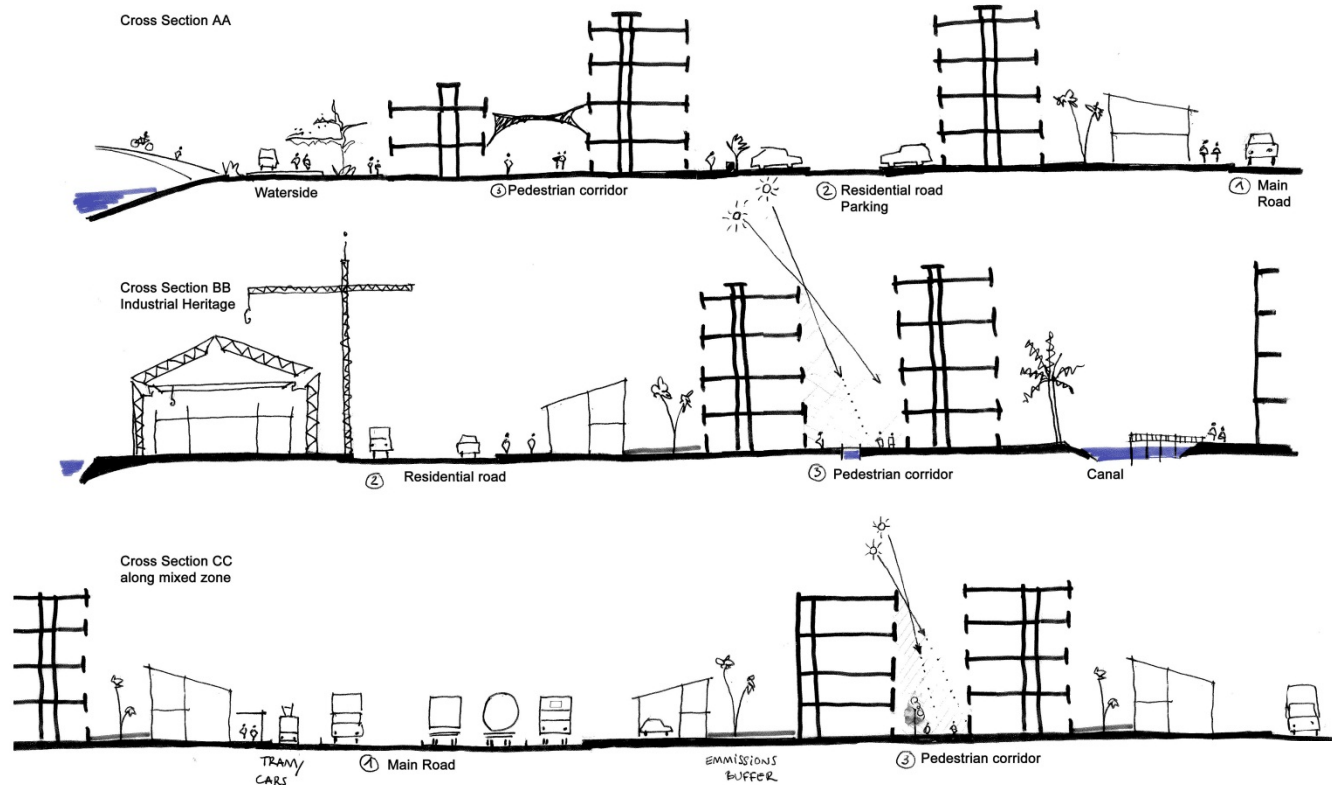
- Road users:
 - Domestic cars
 - Industrial (Lighter)
 - Industrial (Heavier)
- Two loops which work with land uses to mitigate impacts
- Control of road directions & hierarchy

Private Traffic: Road Hierarchy



- Two loops with in/out only access points
- Hierarchy roads:
 - Loop roads
 - Secondary roads
 - Local roads

Private Traffic: Road Hierarchy





Group B Morphology and Activities

Mariam Al Ameri

Mohamed Al Ameri

Sultan Echtibi

Mira Milakovic

Omar Al Suwaidi

Peter Vanden Abeele

Musaffah 2030

Group B

Morphology and Activities

Introduction

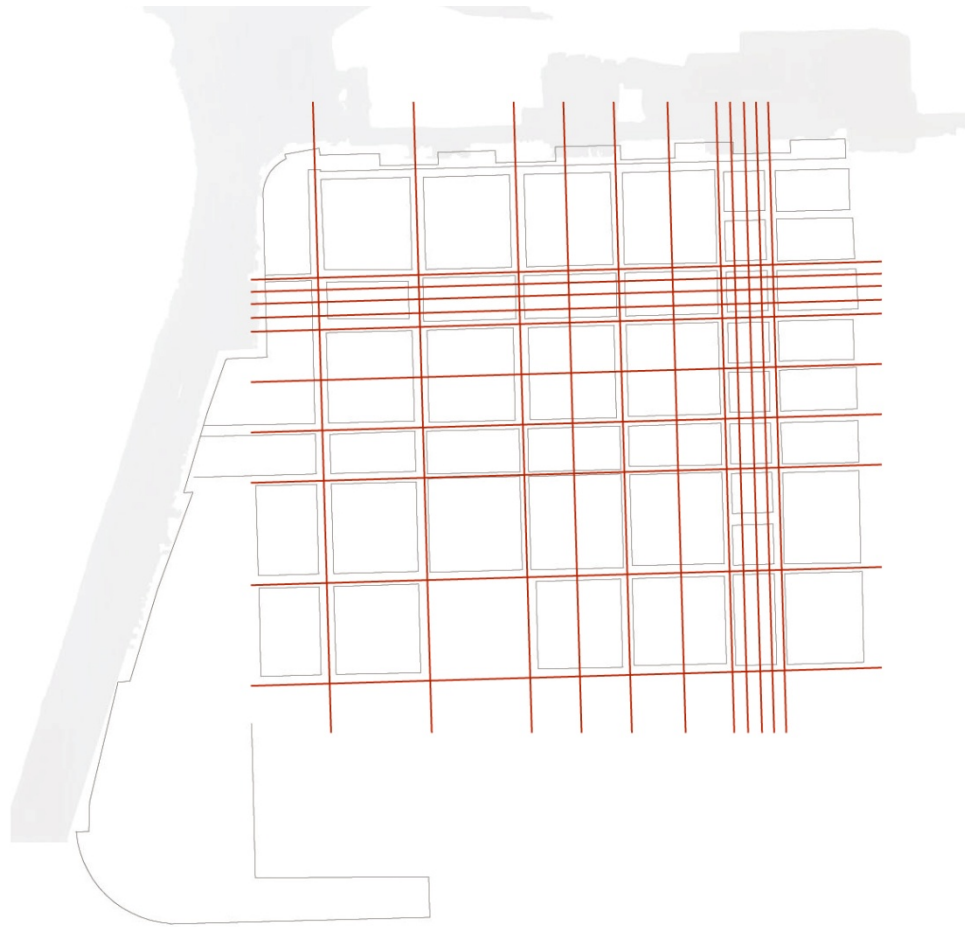
- **Task Revitalized industrial area;**
- **Morphology;**
- **Typology;**
- **Activities;**

Goals

- **Estidama principles;**
- **Vernacular architecture;**
- **Evolutive structures;**
- **Affordable housing.**

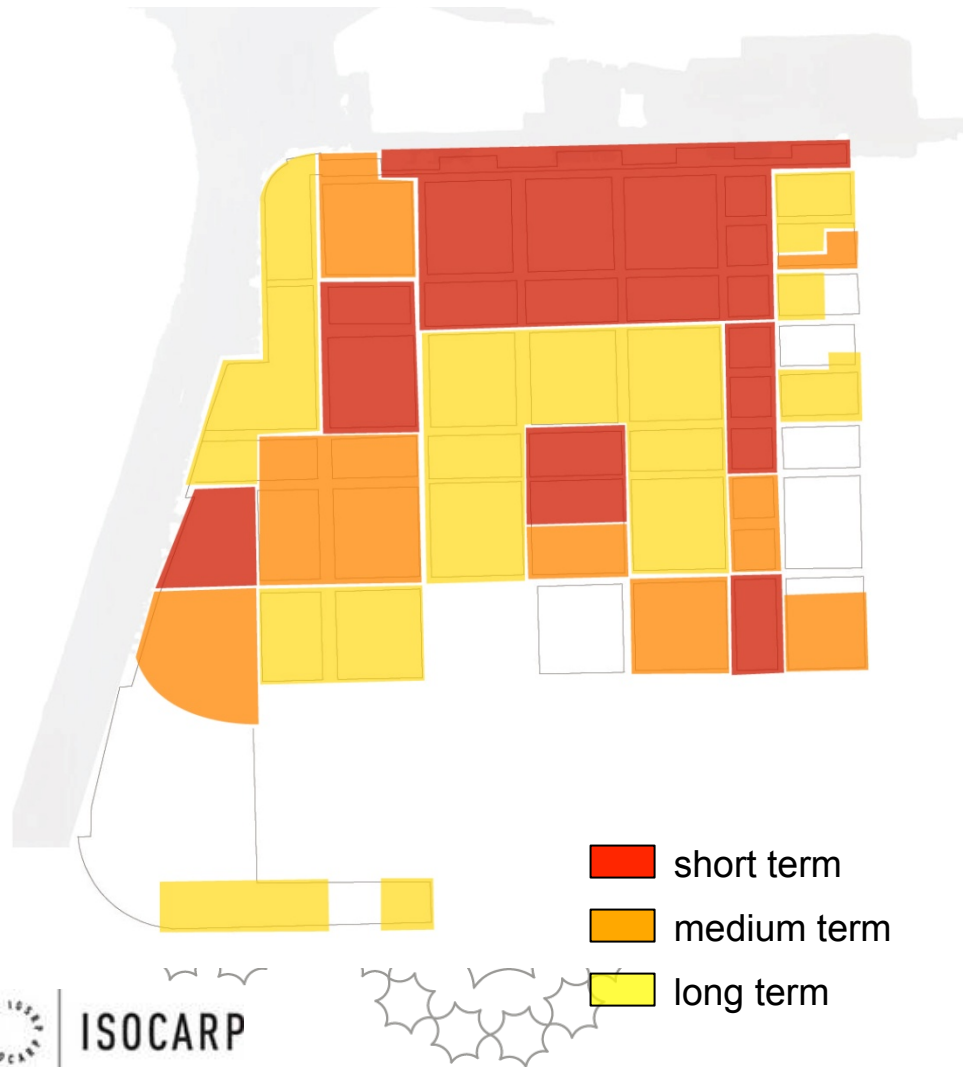
Existing morphology

As basis for new development





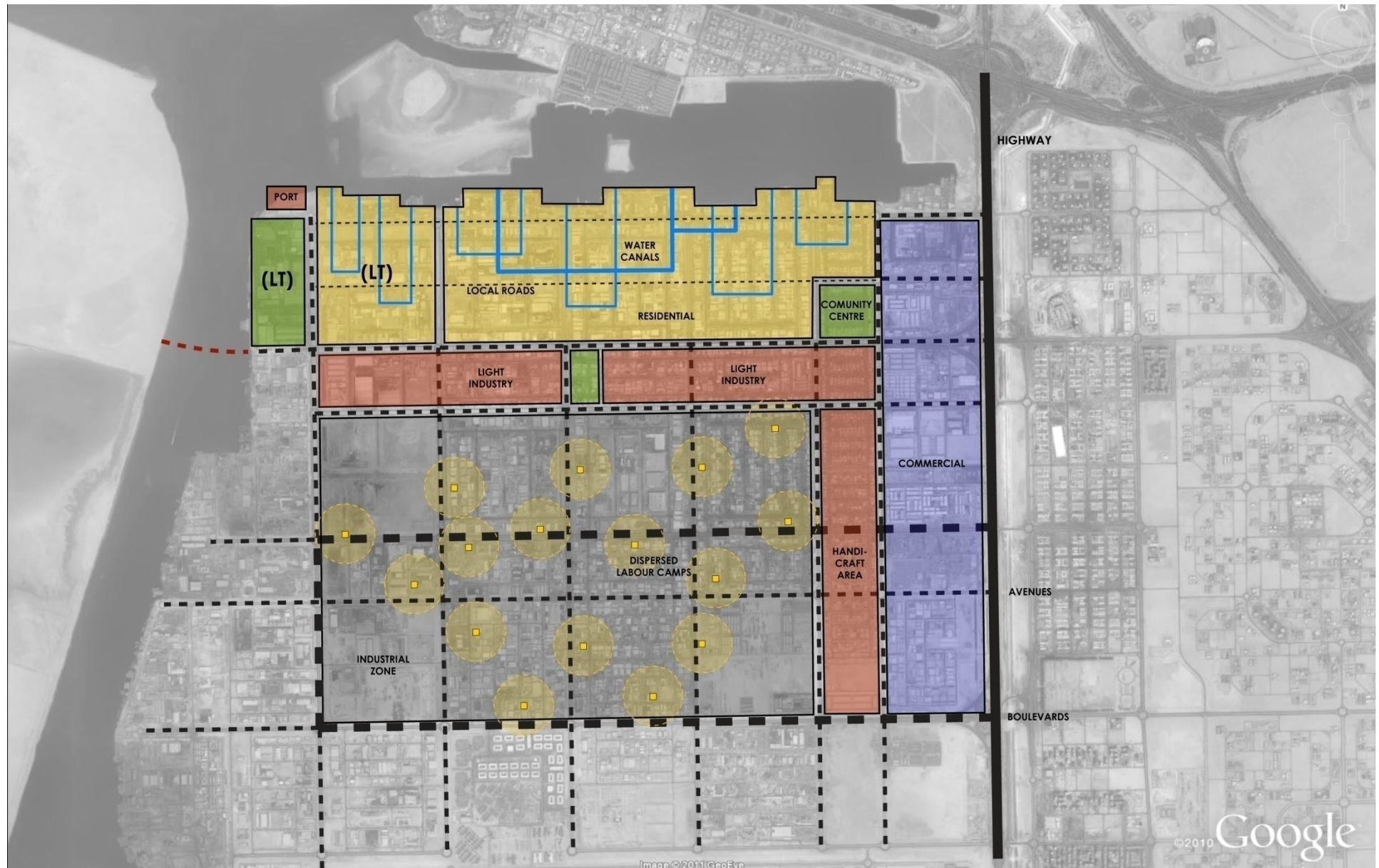
Transformation process phases of intervention



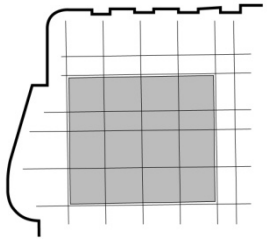
2 concepts:

- 1/ the lease expire date for short term development
- 2/ Mussafah Masterplan for long term development

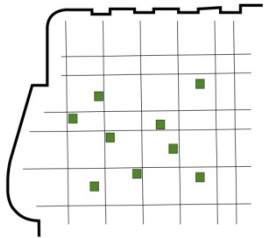
Proposed intervention



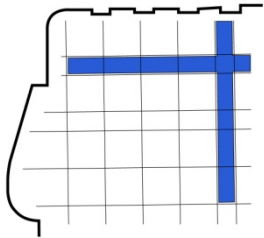
Typology concepts



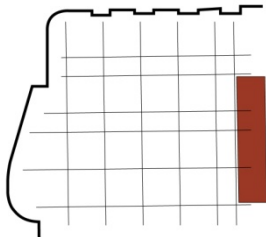
district _ medium/extra large scale _ industrial area (light+heavy)



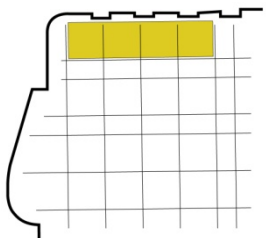
dots _ small scale _ labor residences



strips _ small/middle scale _ light industry/handycraft



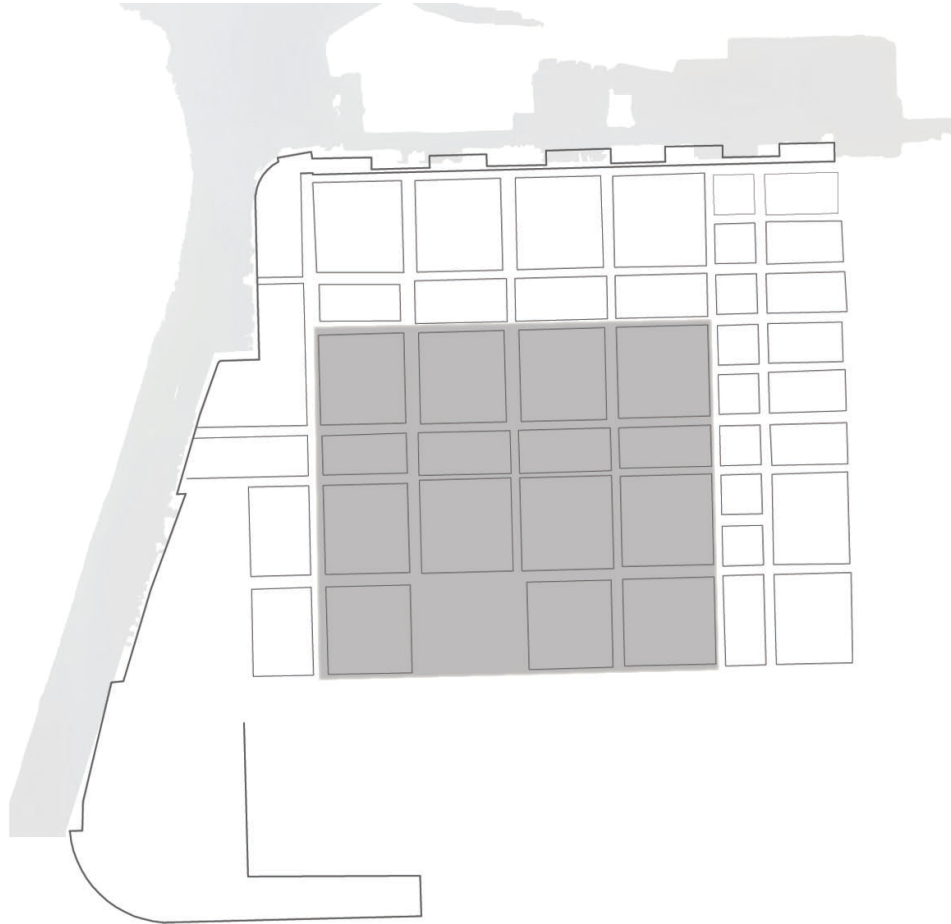
edge _ large scale _ commercial area (car showrooms, commercial walls, large retail, hotel, drive in...)



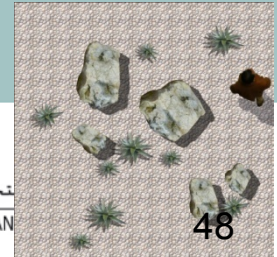
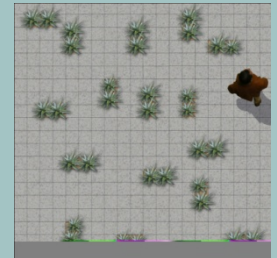
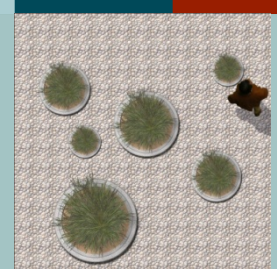
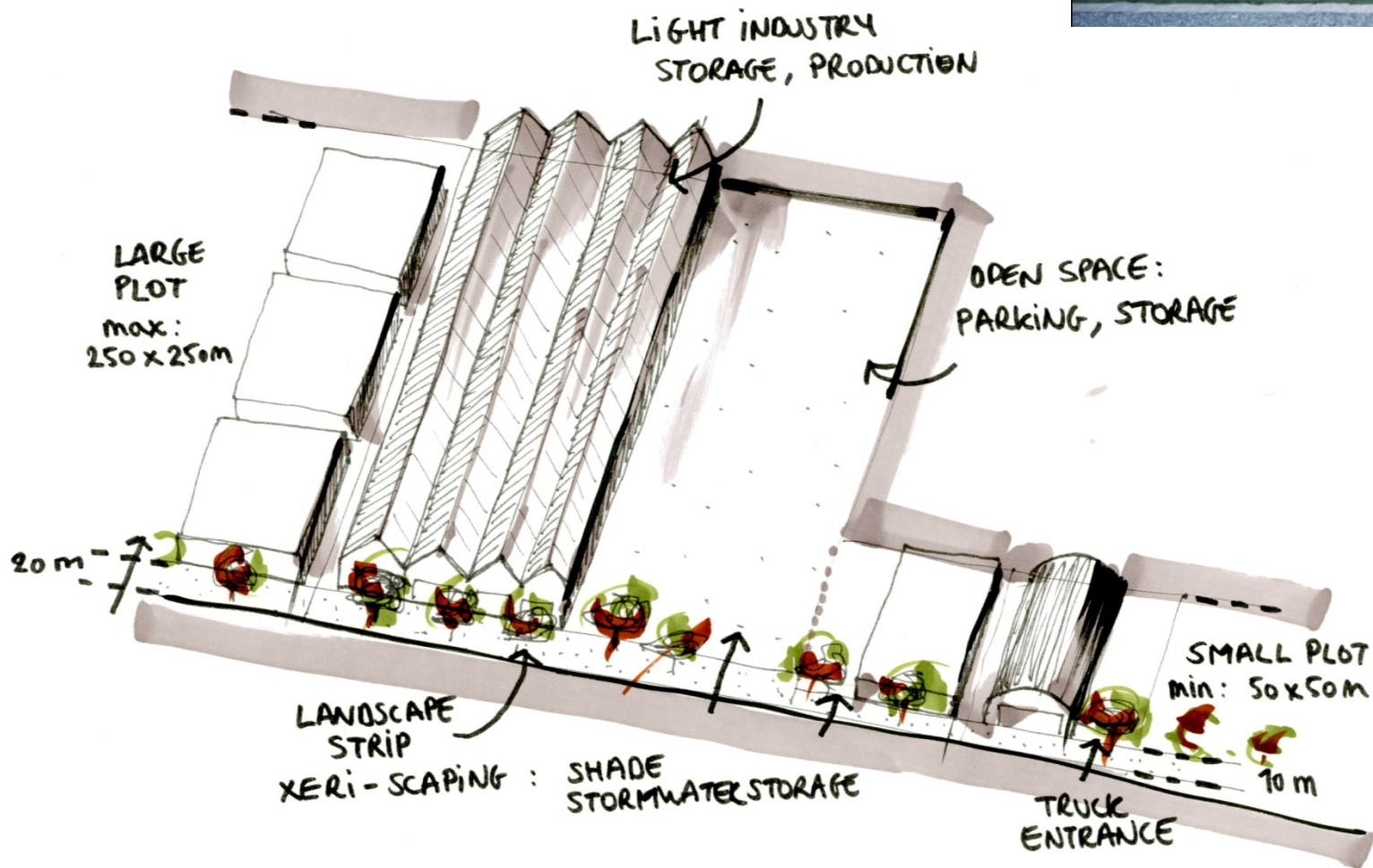
patch _ extra large scale _ residential area
(low to medium income)

1 District

- Redesigning the industrial fabric
- Improving landscape quality



District



ISOCARP



تخطيط العمراني
ABU DHABI URBAN

2 Dots

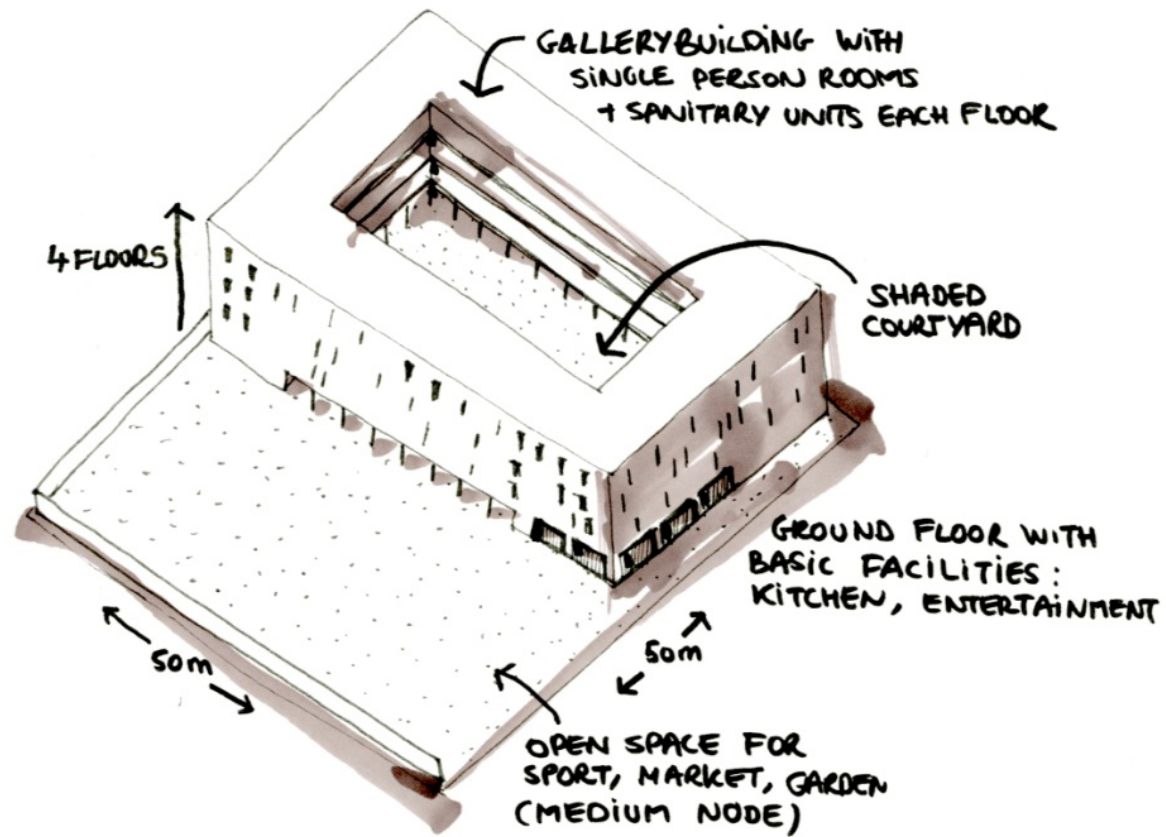
- Introduce labour residences dispersed in the area



Brief residential program:

- _ rooms for 150 people
- _ basic facilities /kitchen, sanitary, recreation
- _ courtyard model
- _ free open space
- _ community center / mosque
- _ pedestrian radius 500m

2 Dots



3 Strips

- Transition mixed use zone

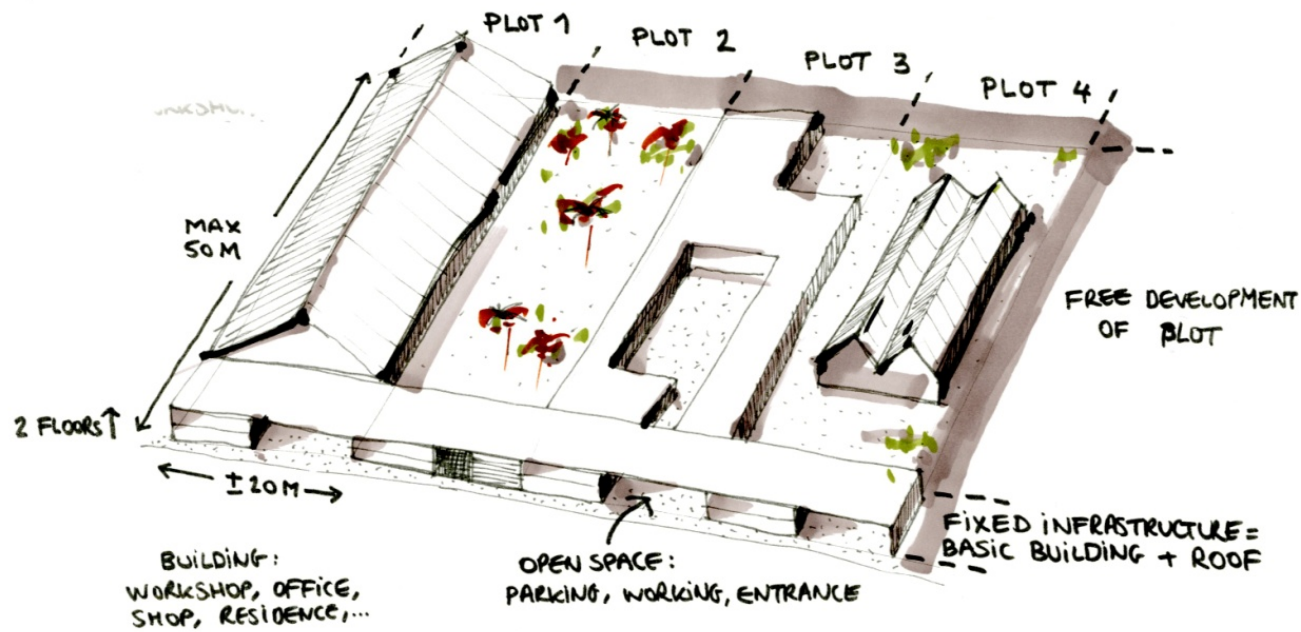


Brief description:

- _ mix of small scale functions: light industry, handycraft, workshops, atelier, shops...
- _ re-use of existing fabric and buildings
- _ organic growth/development
- _ community center / main square with market, mosque, bus station

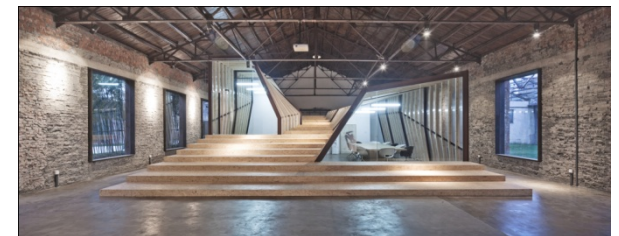
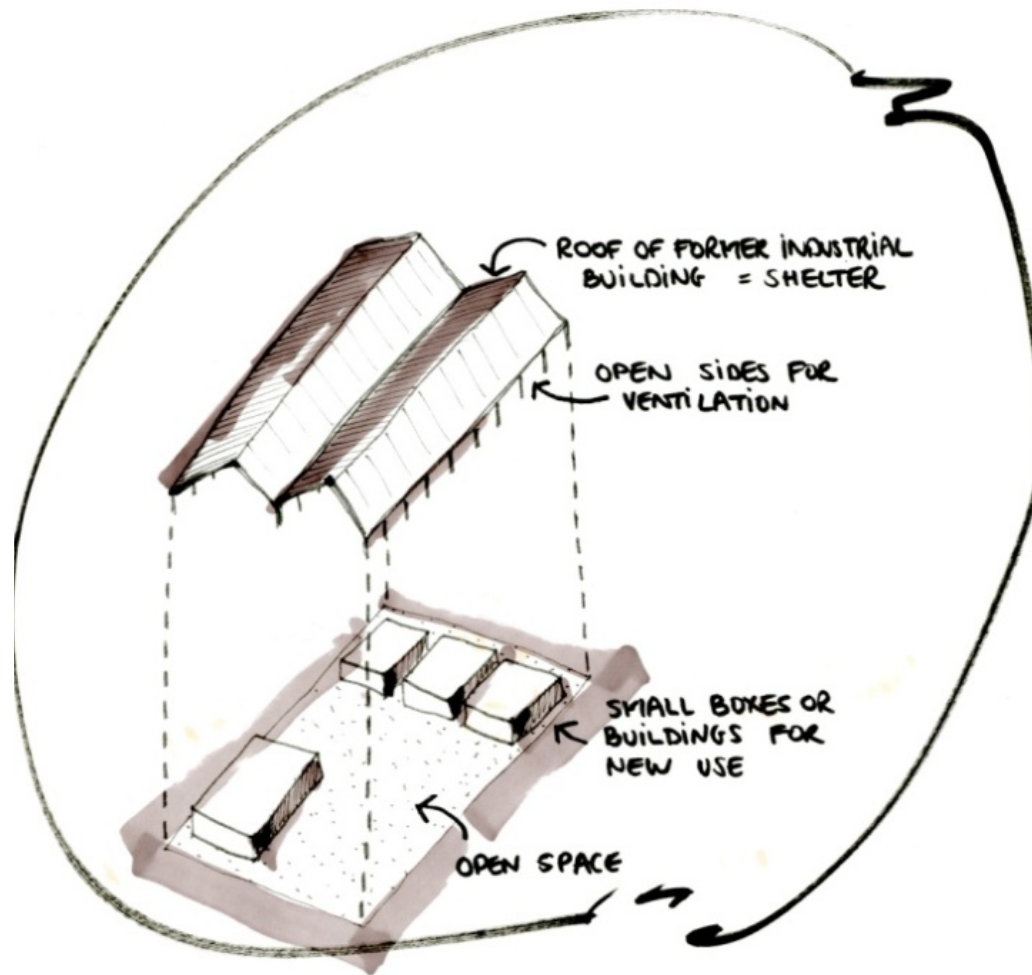
3 Strips

Model 1, workshops



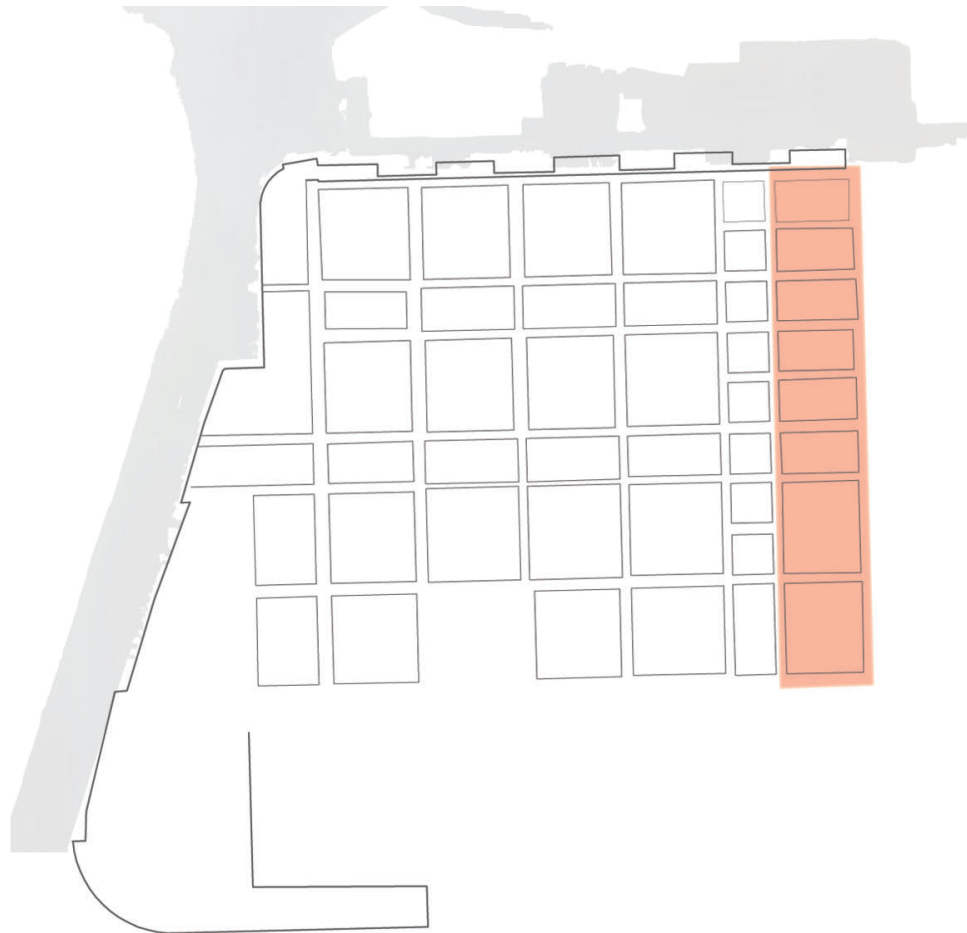
3 Strips

Model 2, shelter



4 Edge

- Commercial area with visibility along highway

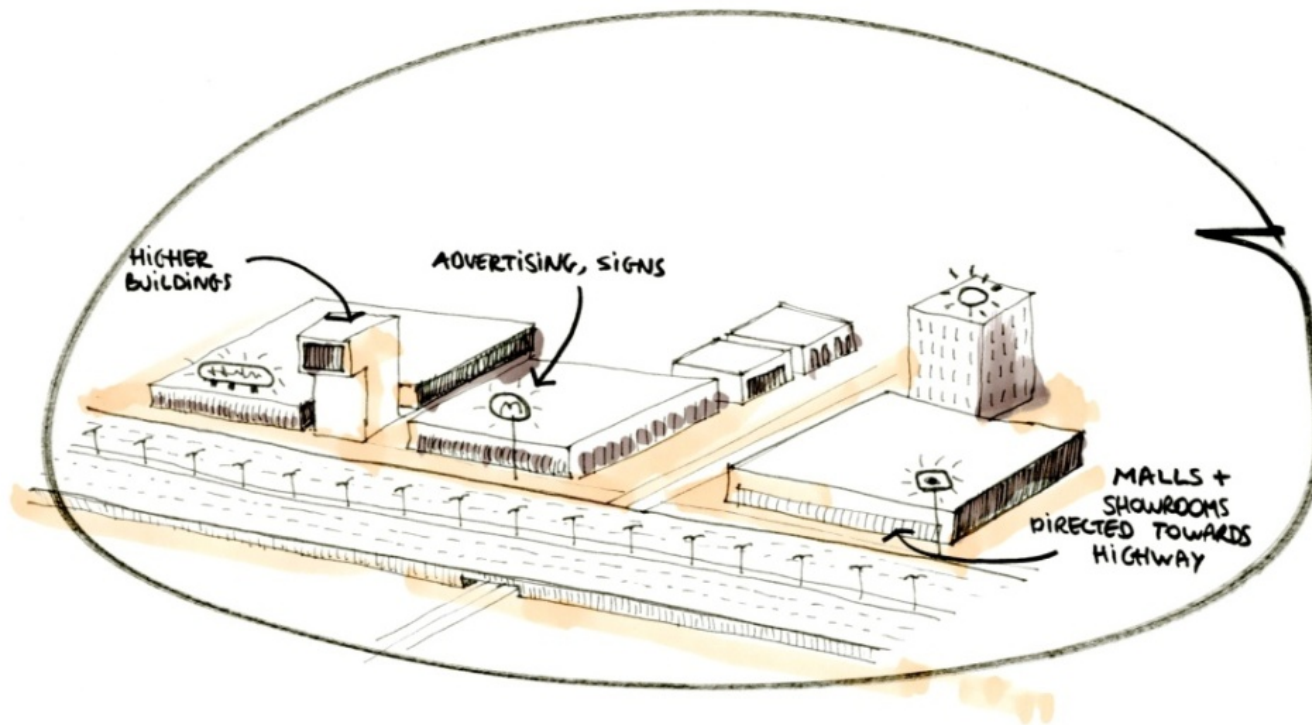


Brief description:

- _ mix of small and large scale commercial /car showrooms, furniture, mall, building materials.../
- _ billboard location along highway for good visibility and advertising
- _ entrance area for Mussafah and the city

4 Edge

Las Vegas strip model



5 Patch

- Large scale residential neighborhood _ Arabic city

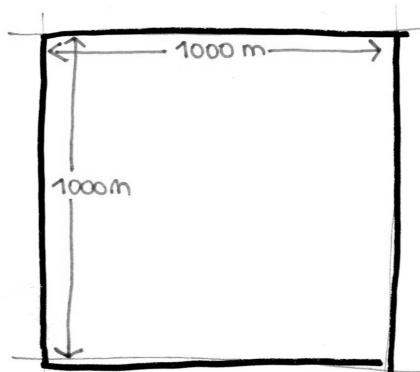


Brief description:

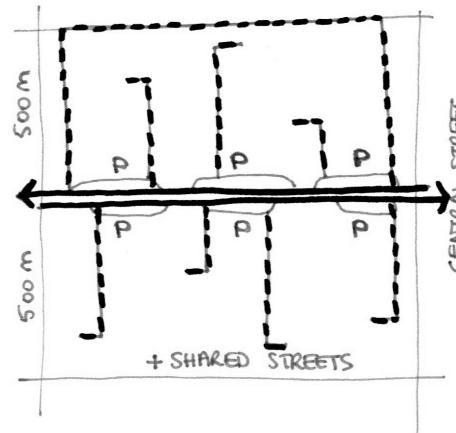
- _ adaptation of FREEJ model and KASBAH city
- _ courtyard houses and apartments
- _ central parking road
- _ pedestrian walks: shared streets and sikkas
- _ central public square with mosque
- _ public facilities near avenue / school, hospital.../
- _ local shops and cafes along waterfront
- _ waterfront view+ canals
- _ north-south orientation for wind and sun
- _ 3 blocks: 80000 people

5 Patch

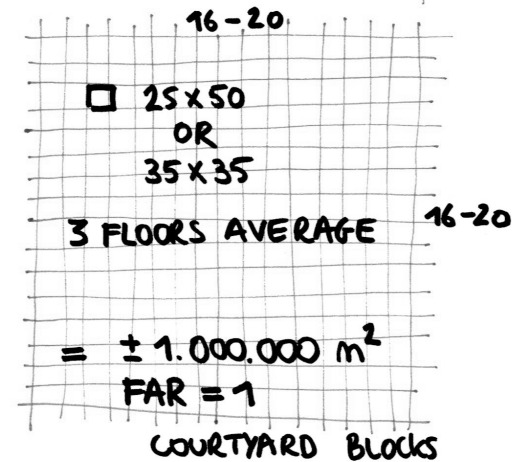
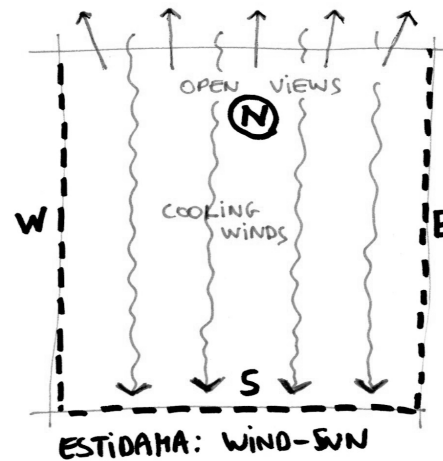
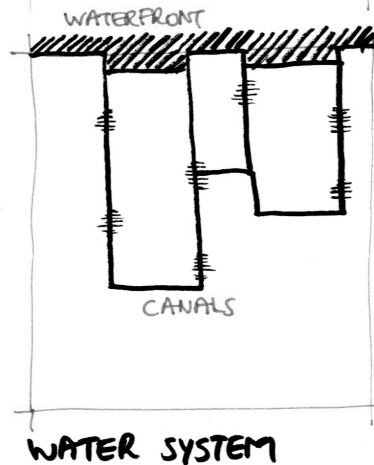
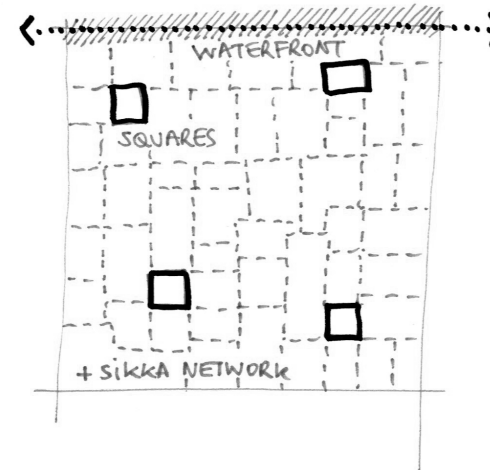
RESIDENTIAL BLOCK



TRAFFIC SYSTEM



PEDESTRIAN SYSTEM

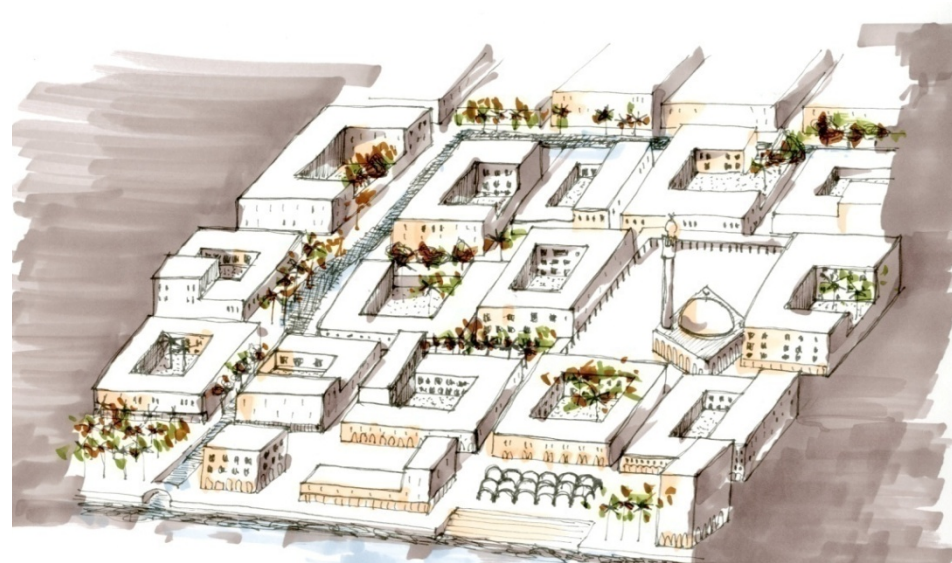


5 Patch

Kasbah / Freej model



SECTION

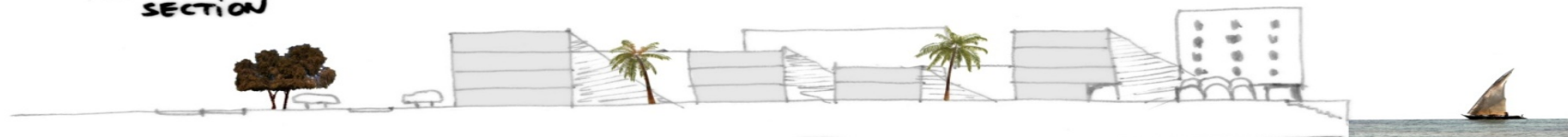


3 6 6
CANAL

6
SHARED STREET

60
SQUARE

SOUTH - NORTH
SECTION



8 1 4 15 18 15
STREET + PARKING

3
SIKKA

20 - 50
PROMENADE





Group C Social Integration, Identity, Culture

Jaber Al Dharif
Ahmed Al Kuwaiti
Hamdan Al Mulla
Muna Al Shehhi
Thomas Buhler
Madalen Gonzalez Bereziartua



ISOCARP

مجلس أبوظبي للتخطيط العمراني
ABU DHABI URBAN PLANNING COUNCIL



Musaffah 2030

Group C

Heritage as a vehicle for social integration



ISOCARP

مجلس أبوظبي للتخطيط العمراني
ABU DHABI URBAN PLANNING COUNCIL



Introduction

What is Mussafah ?



ISOCARP


مجلس أبوظبي للتخطيط العمراني
ABU DHABI URBAN PLANNING COUNCIL



Describing the situation of the area

- **Emptiness;**
- **Anonymous;**
- **Out of scale;**
- **Chaotic;**
- **Monofunctional;**
- **Monotonous.**

Defining the problem

- 
- emptiness
 - anonymous
 - out of scale
 - chaotic
 - monofunctional
 - monotonous



- lack of identity
- no sense of place
 - no landmarks*
 - gigantic scale*
- social disintegration

Facing the problem

- Enhance the heritage of the site

industrial heritage

- lack of identity
- spontaneous behaviour*
- no sense of place

- Structuring the space
- no landmarks*
gigantic scale

- Two levels of integration

social disintegration

expats / expats

emirati / expats



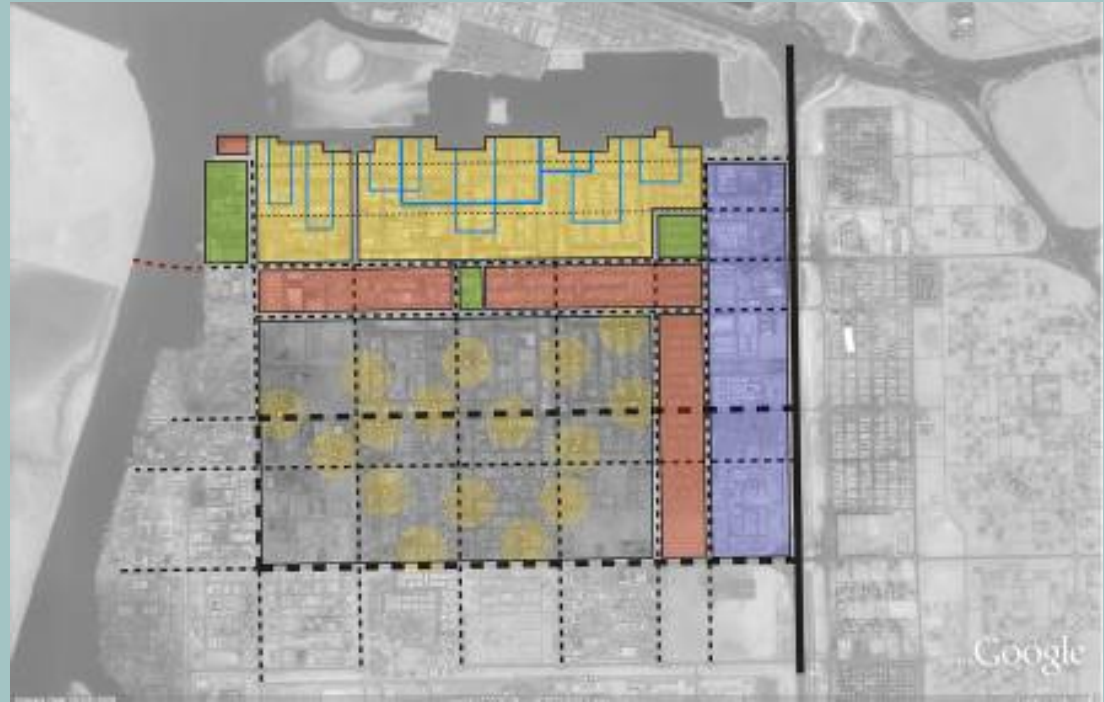
ISOCARP

مجلس أبوظبي للتخطيط العمراني
ABU DHABI URBAN PLANNING COUNCIL

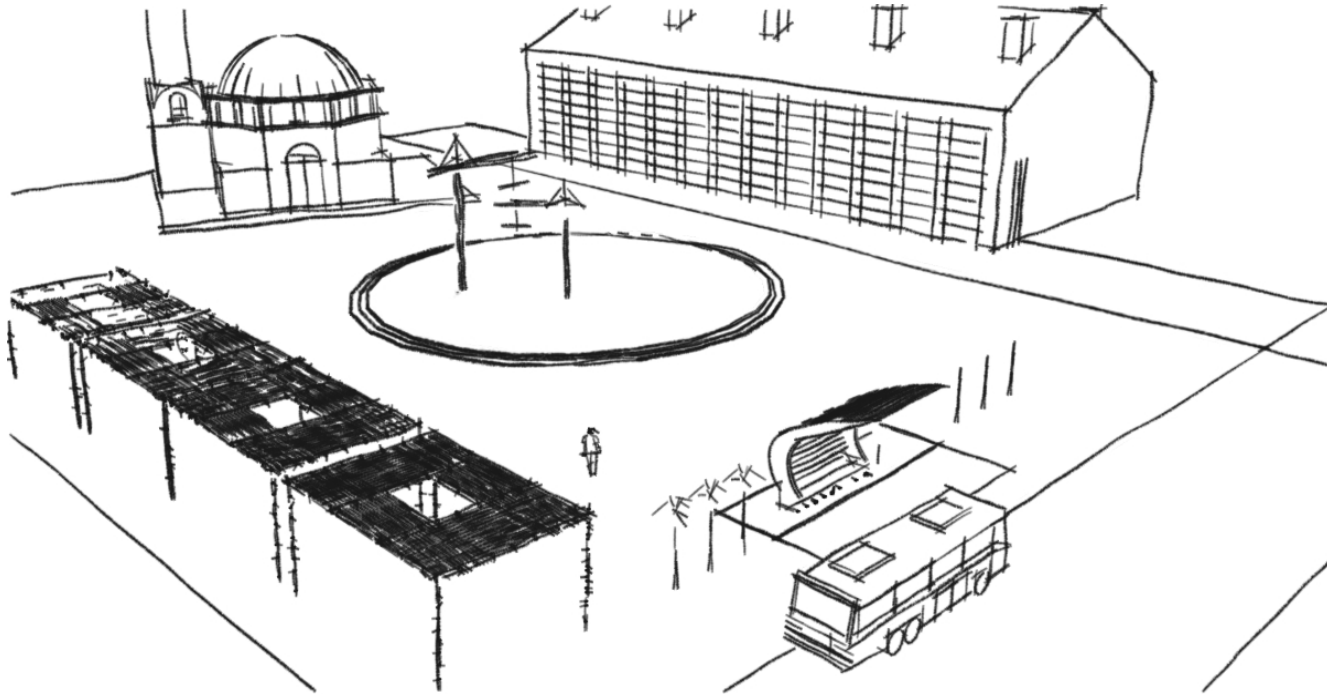


Strategies

- Dots
- Strip
- Patch

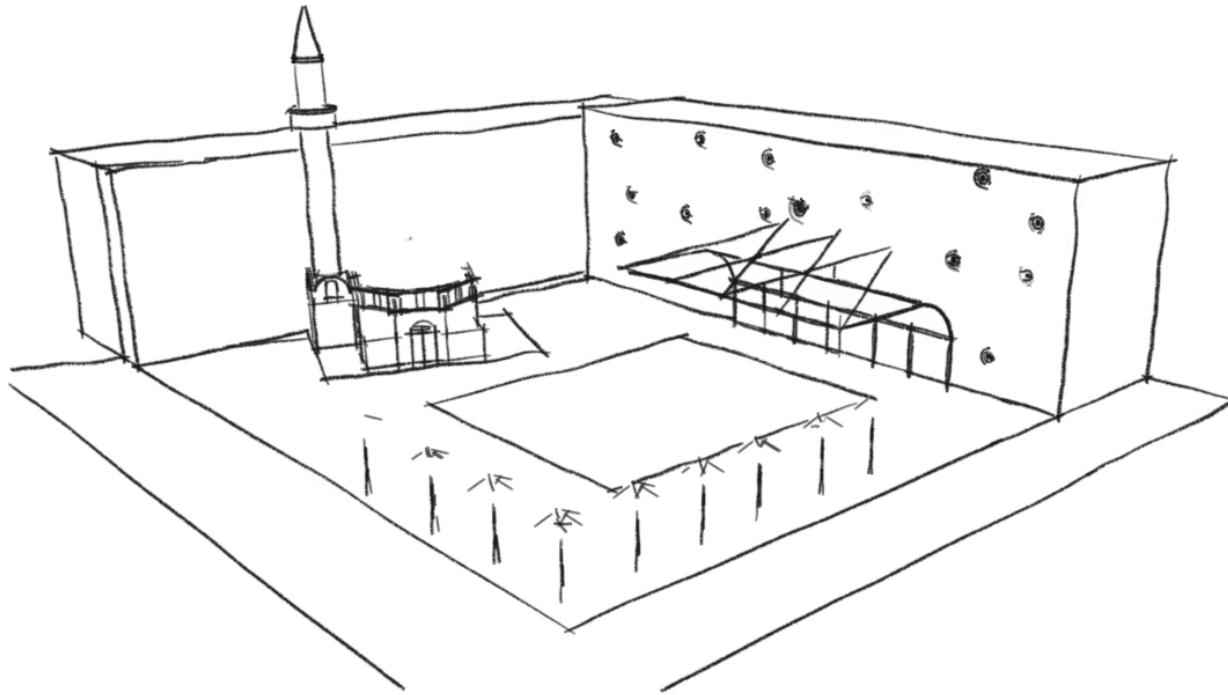


Large scale



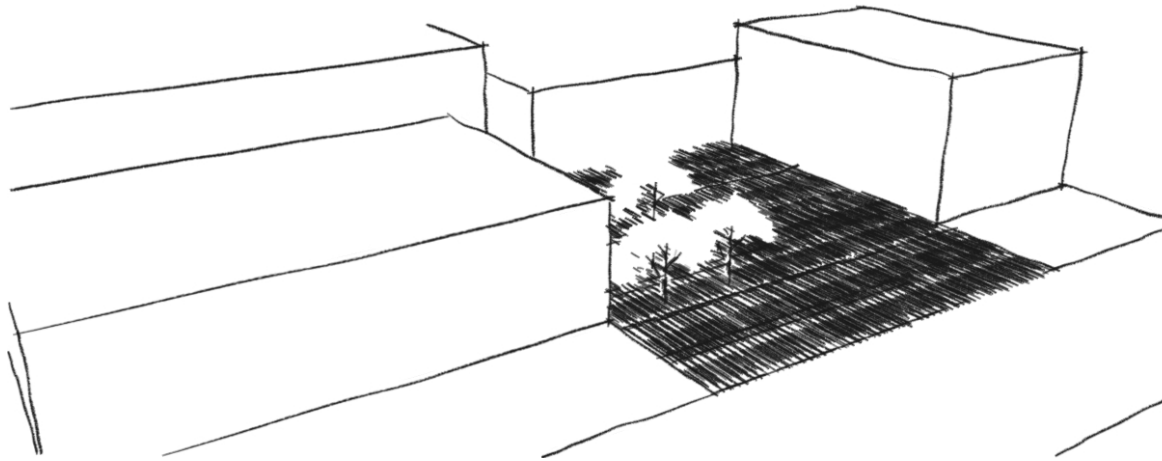
- Mosque
- Market
- Main bus Station
- Community facilities

Medium scale



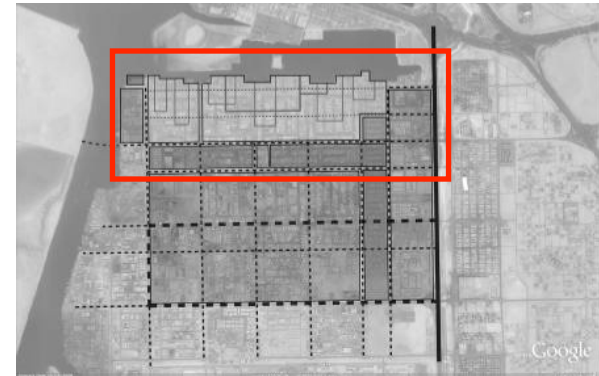
- Mosque
- Mixed-use open space
- Station
- Labour residence

Small scale

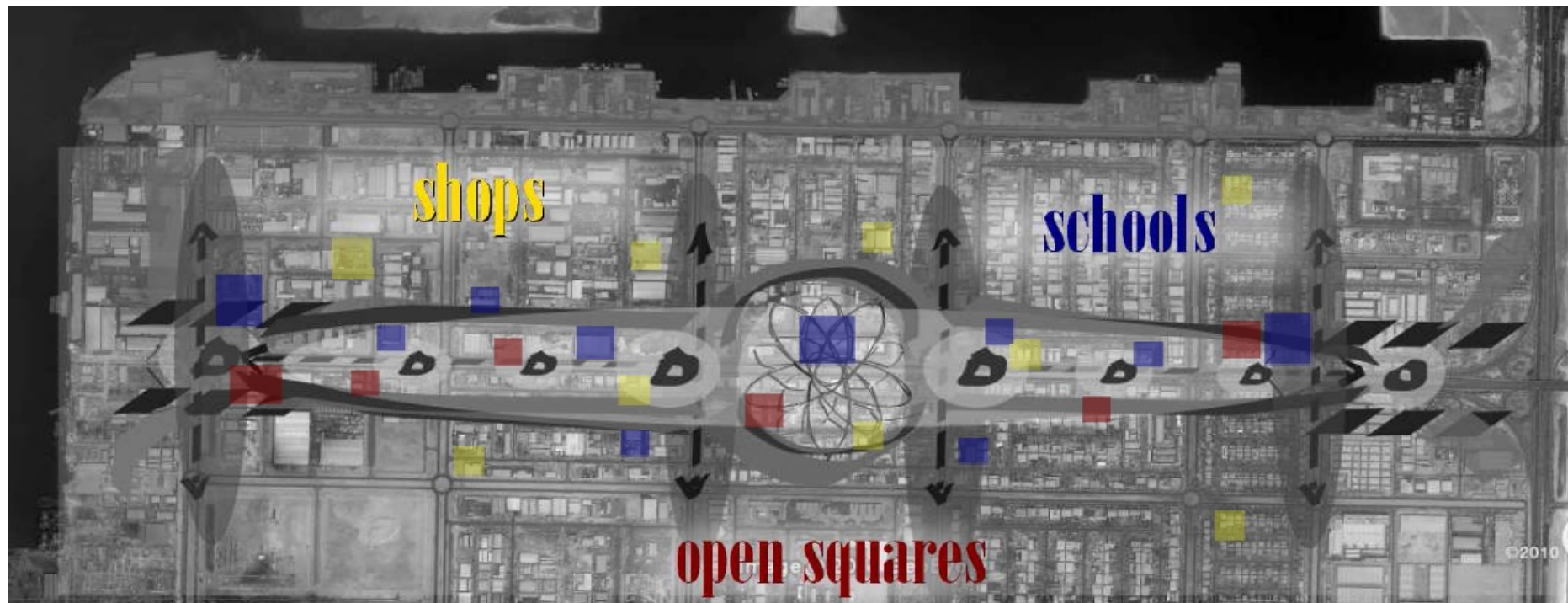
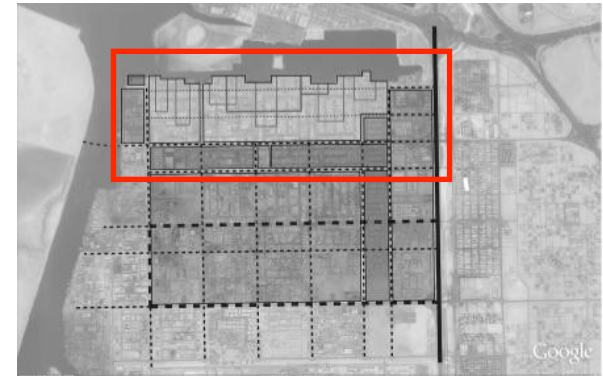


- Left-over empty plot
- Social interactions
- Connection to the pedestrian path

Linear core



Linear core



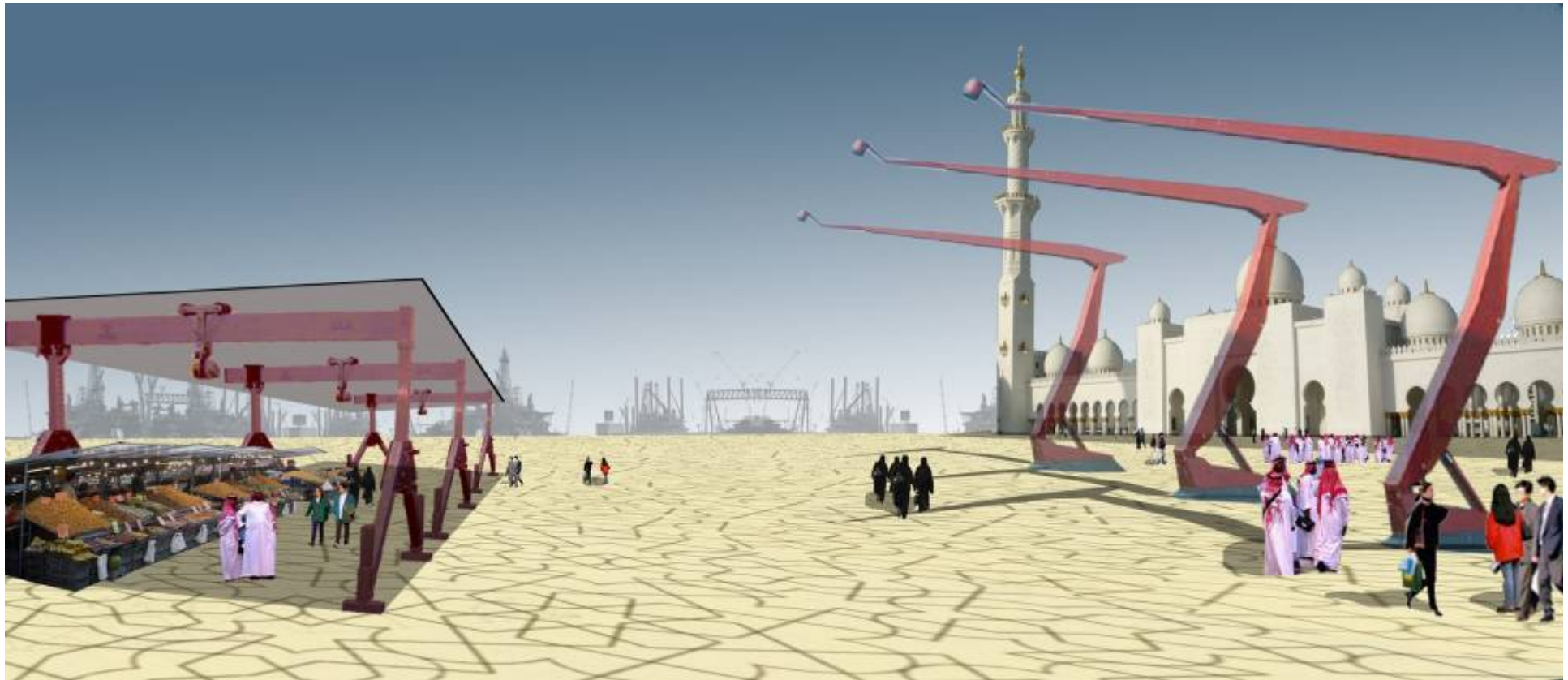
ISOCARP



مجلس أبوظبي للتخطيط العمراني
ABU DHABI URBAN PLANNING COUNCIL



Central square



ISOCARP

مجلس أبوظبي للتخطيط العمراني
ABU DHABI URBAN PLANNING COUNCIL



Main gate



+



ISOCARP

مجلس أبوظبي للتخطيط العمراني
ABU DHABI URBAN PLANNING COUNCIL



Characterizing the street

From industrial textures ...



... to urban furniture

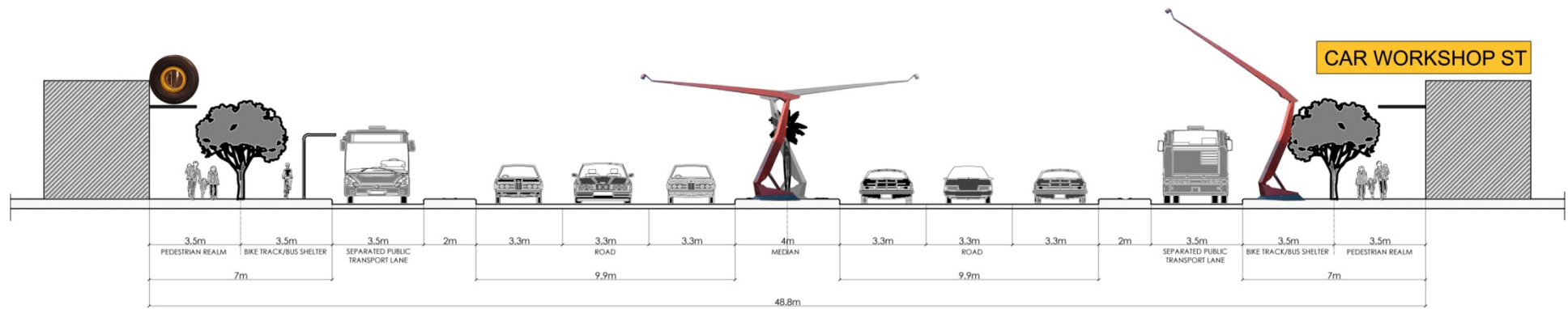


ISOCARP

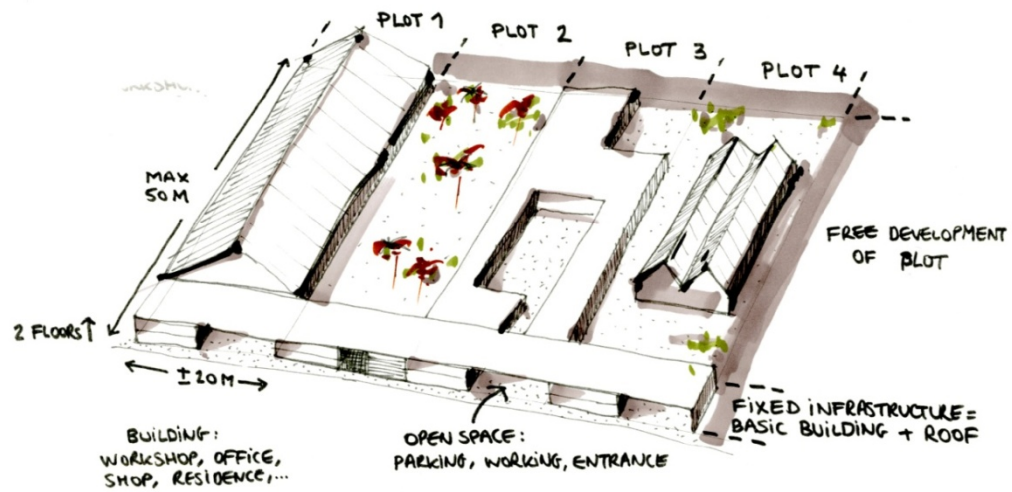
مجلس أبوظبي للتخطيط العمراني
ABU DHABI URBAN PLANNING COUNCIL



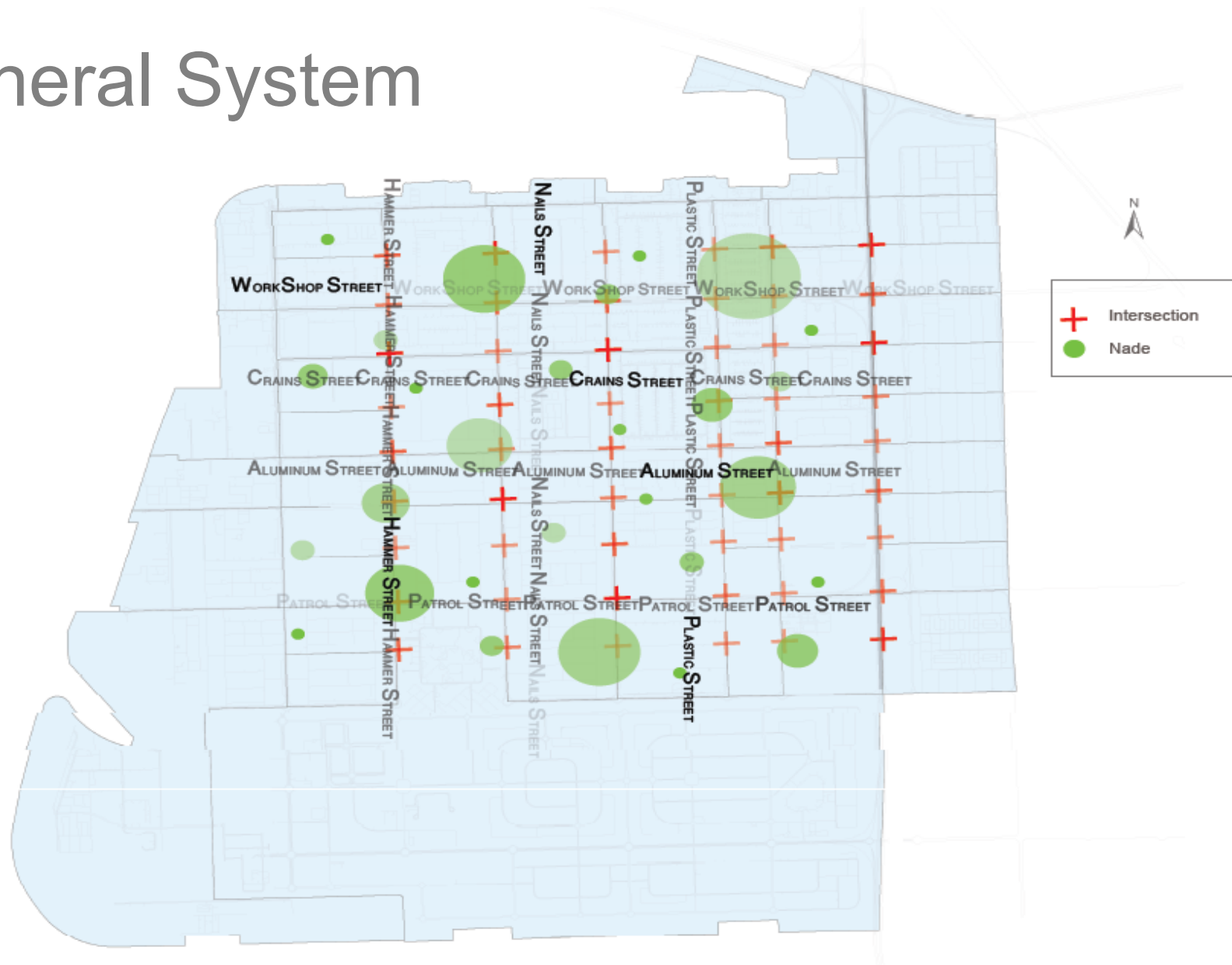
Cross section



Patch



General System

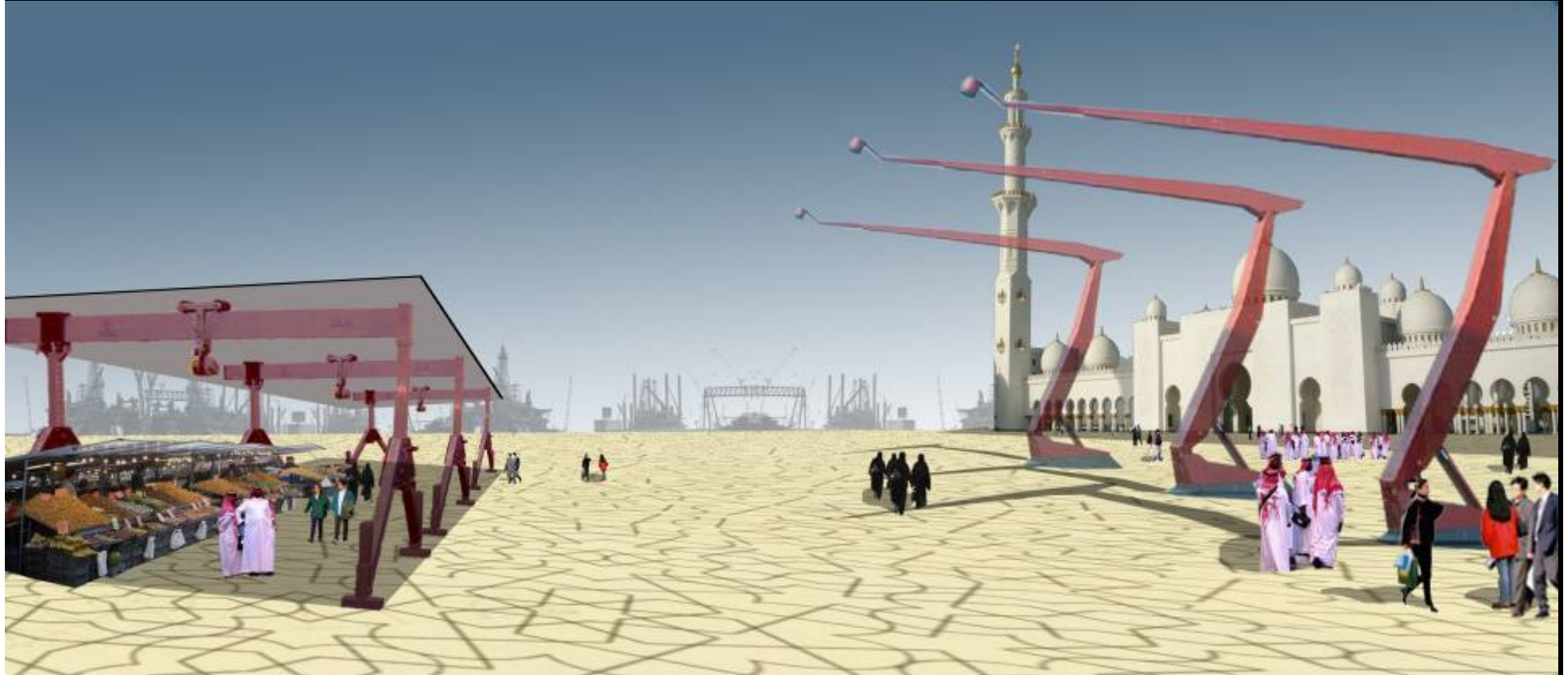


ISOCARP



مجلس أبوظبي للتخطيط العمراني
ABU DHABI URBAN PLANNING COUNCIL





Musaffah 2030

Visioning the future

Group D part 2

Vision, Strategies, Implementation & Framework



ISOCARP

مجلس أبوظبي للتخطيط العمراني
ABU DHABI URBAN PLANNING COUNCIL

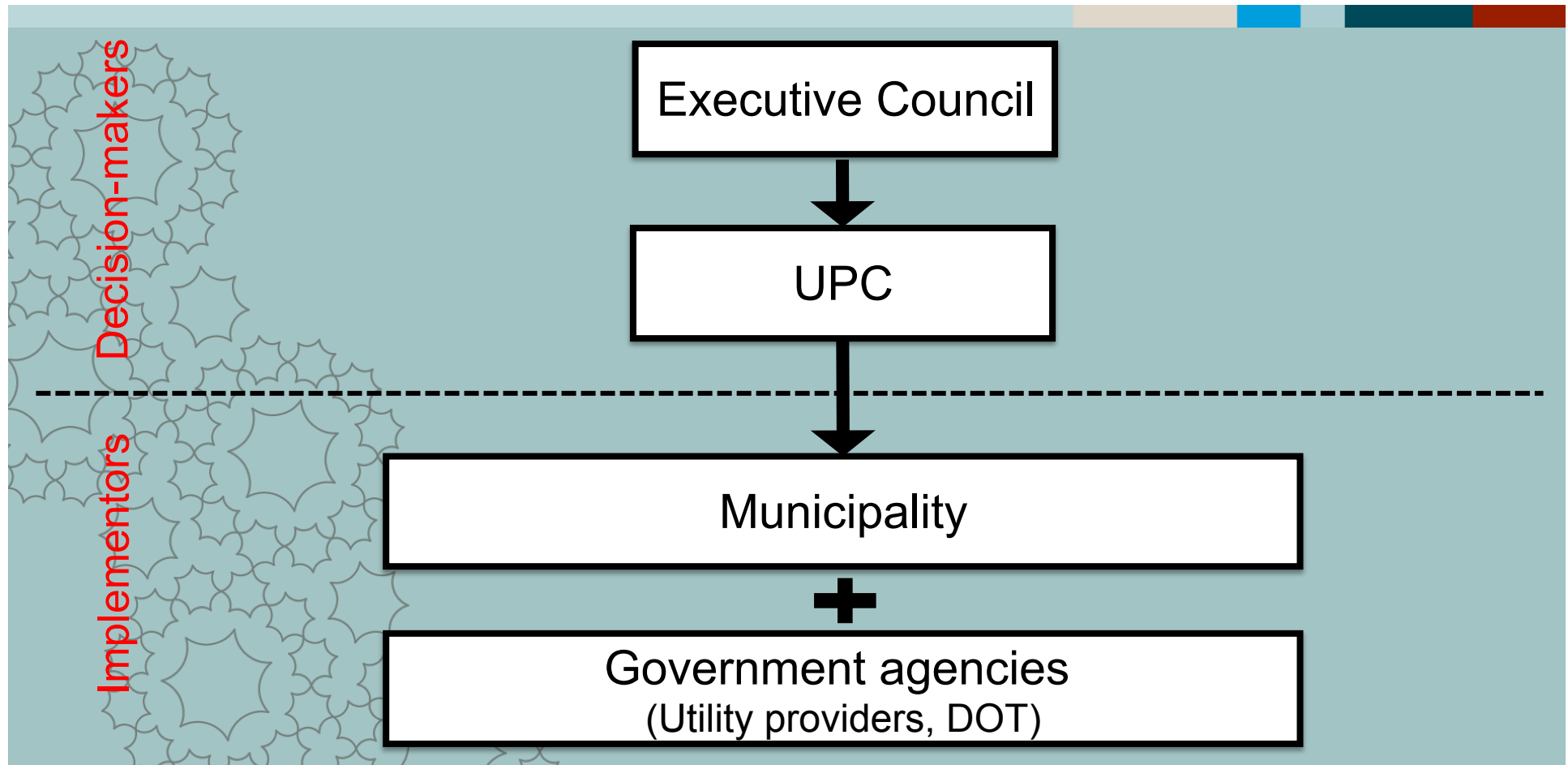


How do we get there?

- **Organizational structure**
- **Implementation tools**
- **Implementation process**

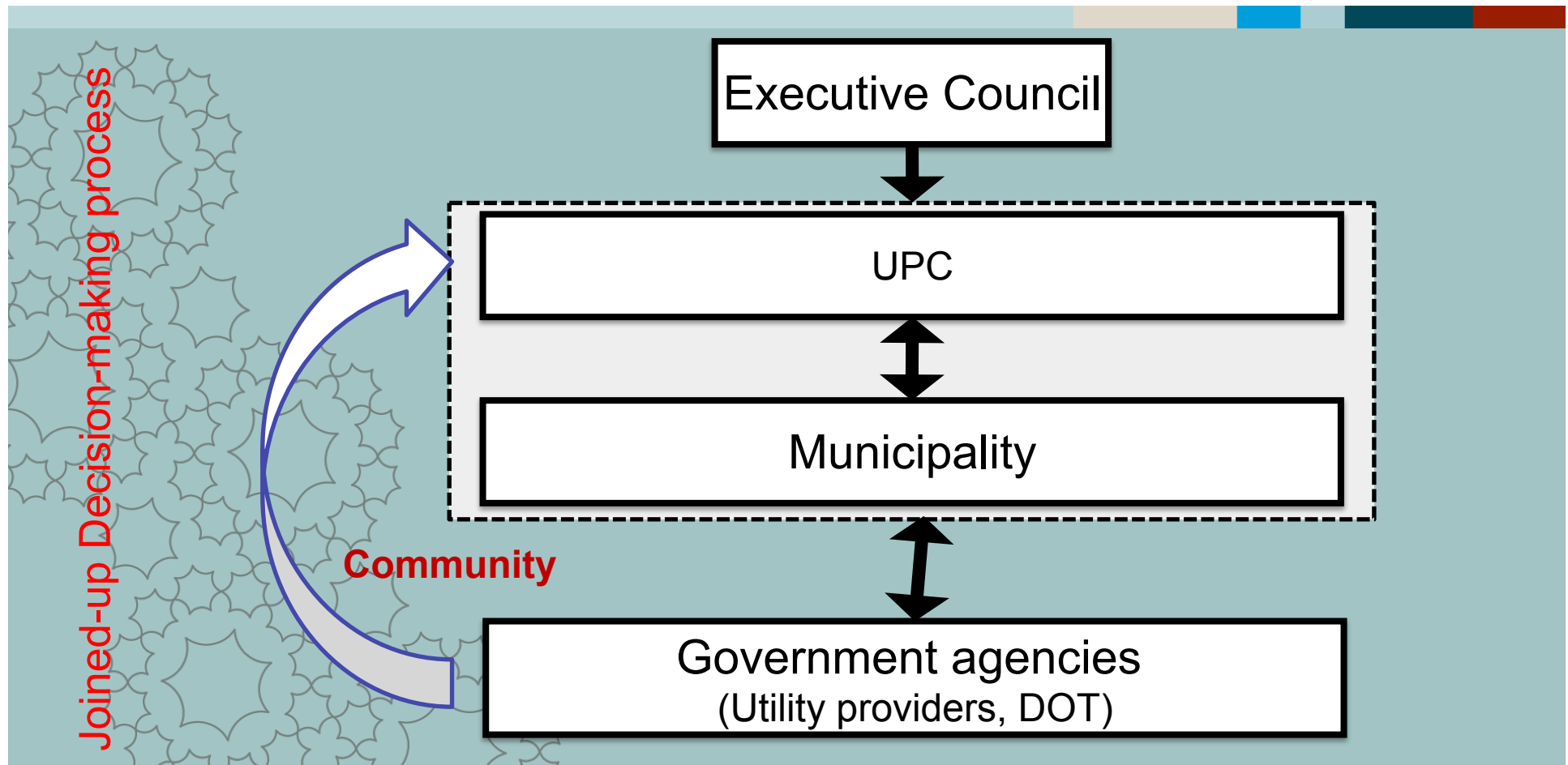
How do we get there?

Organization structure (existing)



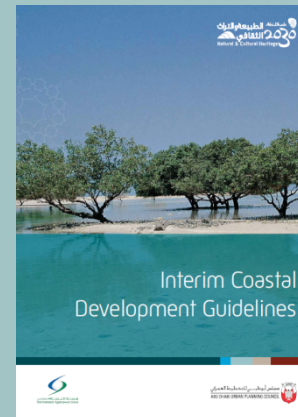
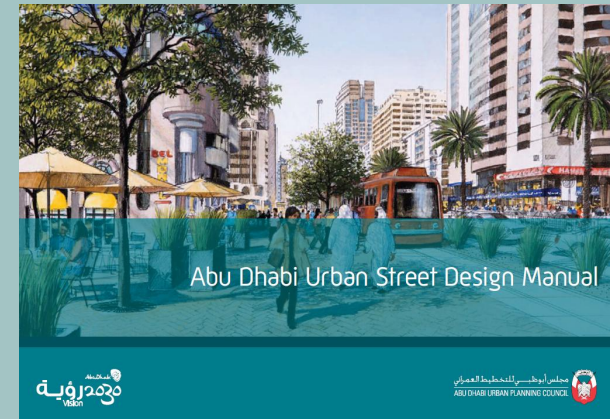
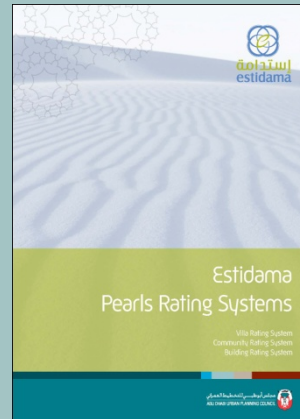
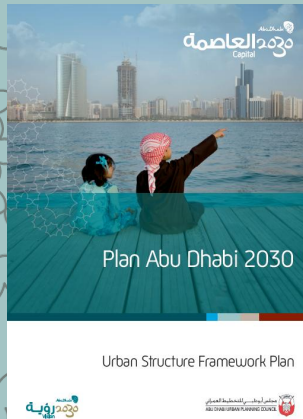
How do we get there?

Organization structure (recommended)



How do we get there?

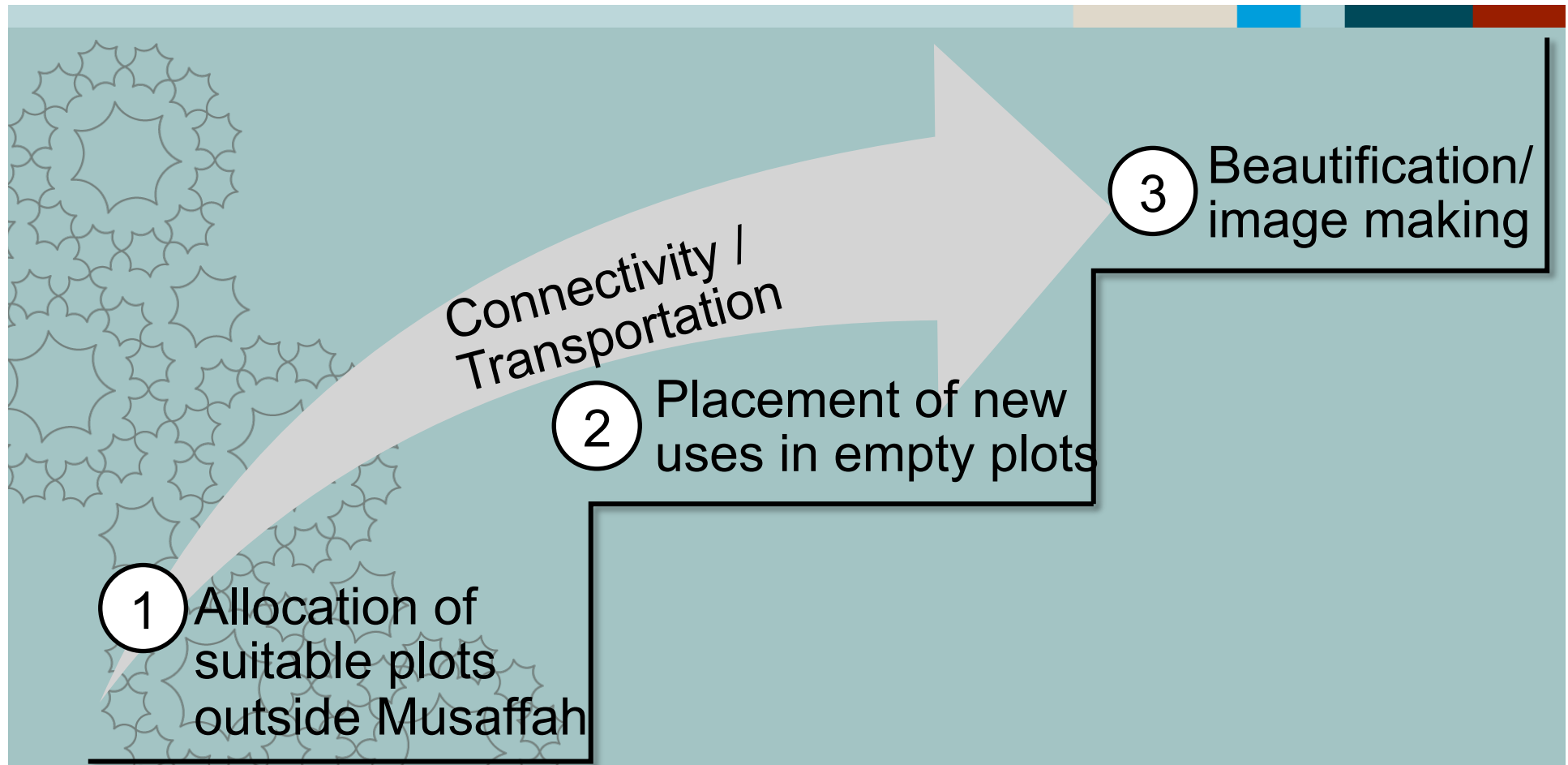
Implementation tools



- Middle Income Housing Rule
- Leasing system
- Participatory forums

How do we get there?

Implementation process

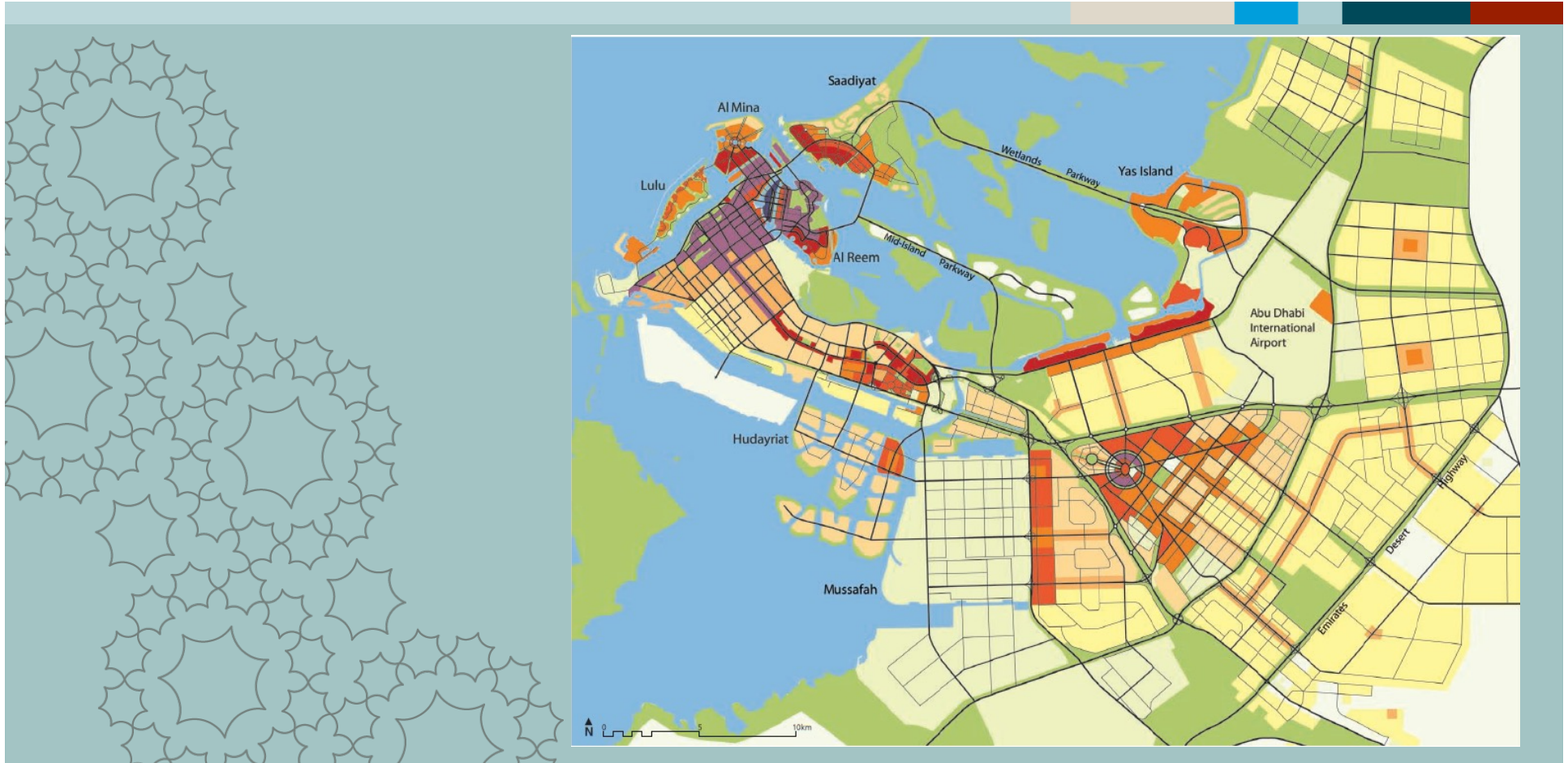


Musaffah 2030

Concluding.....



Concluding.....



ISOCARP

مجلس أبوظبي للتخطيط العمراني
ABU DHABI URBAN PLANNING COUNCIL



Intensive Training Program for Young Planning Professionals

Training Results

Today's Presentation + Report

- “Tornado’s in the mind”
- Musaffa:
 - Not an other plan!;
 - A fresh look at the desired regenerating proces;
 - New ideas / hopefully usefull and implementable.



Questions, comments, discussion



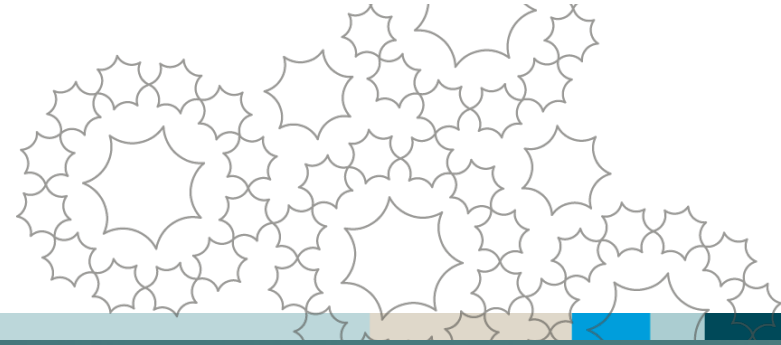
Questions, comments, discussion



ISOCARP

مجلس أبوظبي للتخطيط العمراني
ABU DHABI URBAN PLANNING COUNCIL





Dankjewel

Danke

Merci

Teşekkürler

شكراً

ونتمنى أن نراكم قريباً

Gracias

谢谢

Хвала

Obrigado

Bibliography

Abu Dhabi Plan 2030

Estidama Pearl Rating System

Estidama Design Framework

Street Design Manual

Public Realm Design Manual

Emirati Neighbourhood Guidelines (Freej)

Abu Dhabi Development Code

Safety and Security Charette

Mosque Development Regulations

Interim Coastal Development Guidelines

Middle Income Housing Rule