

Adding layers to  
the city,  
more spaces for  
the community

activating layers underneath for the  
people as cities grow upward

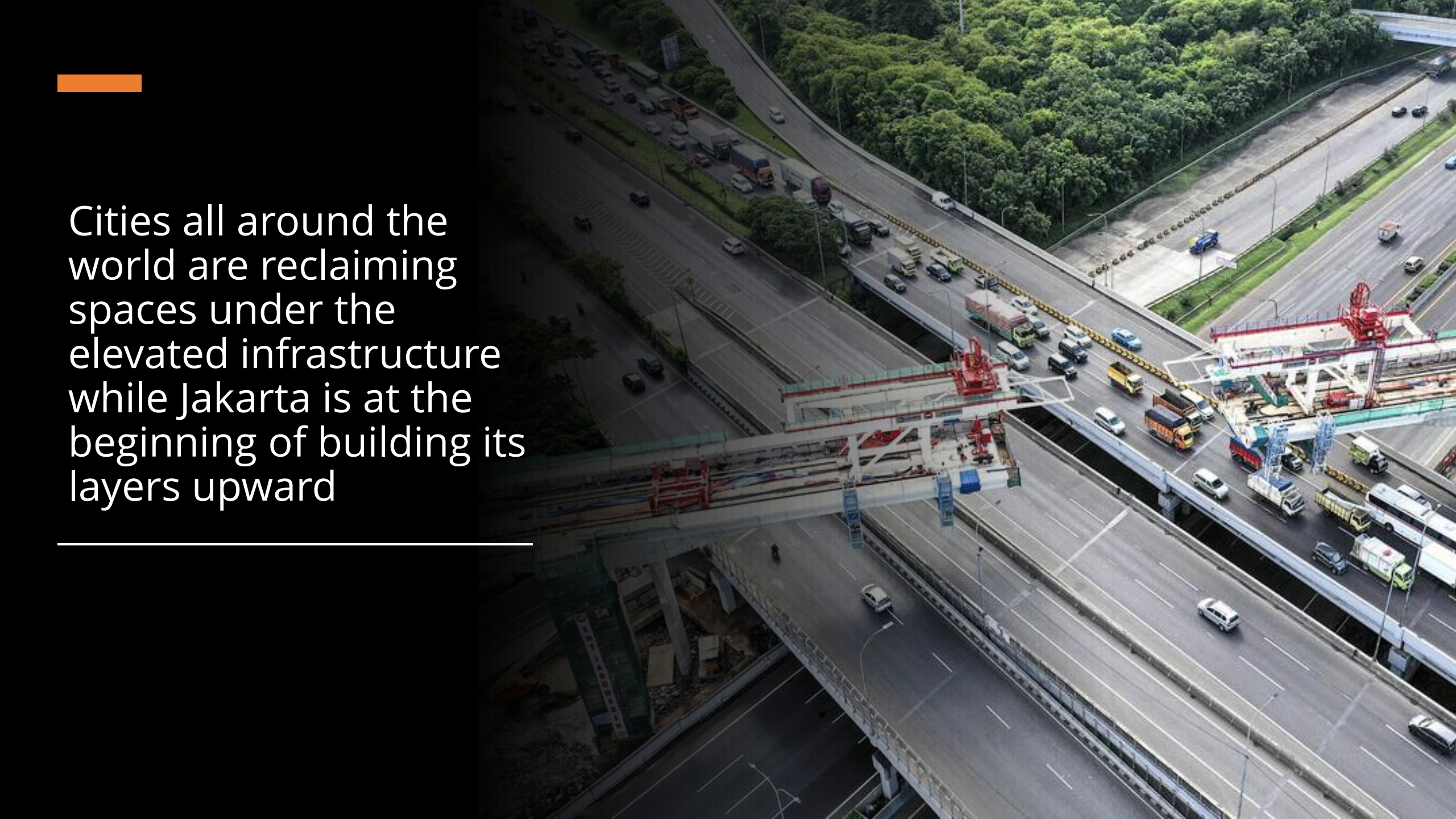






- Fastest-sinking city in the world
- Home to 10 million people
- 60% citizens don't have access to clean pipeline water
- The most polluted city in Southeast Asia
- Frequent flooding
- Traffic problems



An aerial photograph of a complex multi-level highway interchange. The image shows several levels of elevated roads with multiple lanes. There is significant traffic, including cars, trucks, and buses. In the center of the interchange, there are construction cranes and scaffolding, indicating ongoing infrastructure development. The surrounding area includes green trees and some urban infrastructure. The text is overlaid on the left side of the image, with a white line underneath it.

Cities all around the world are reclaiming spaces under the elevated infrastructure while Jakarta is at the beginning of building its layers upward

---



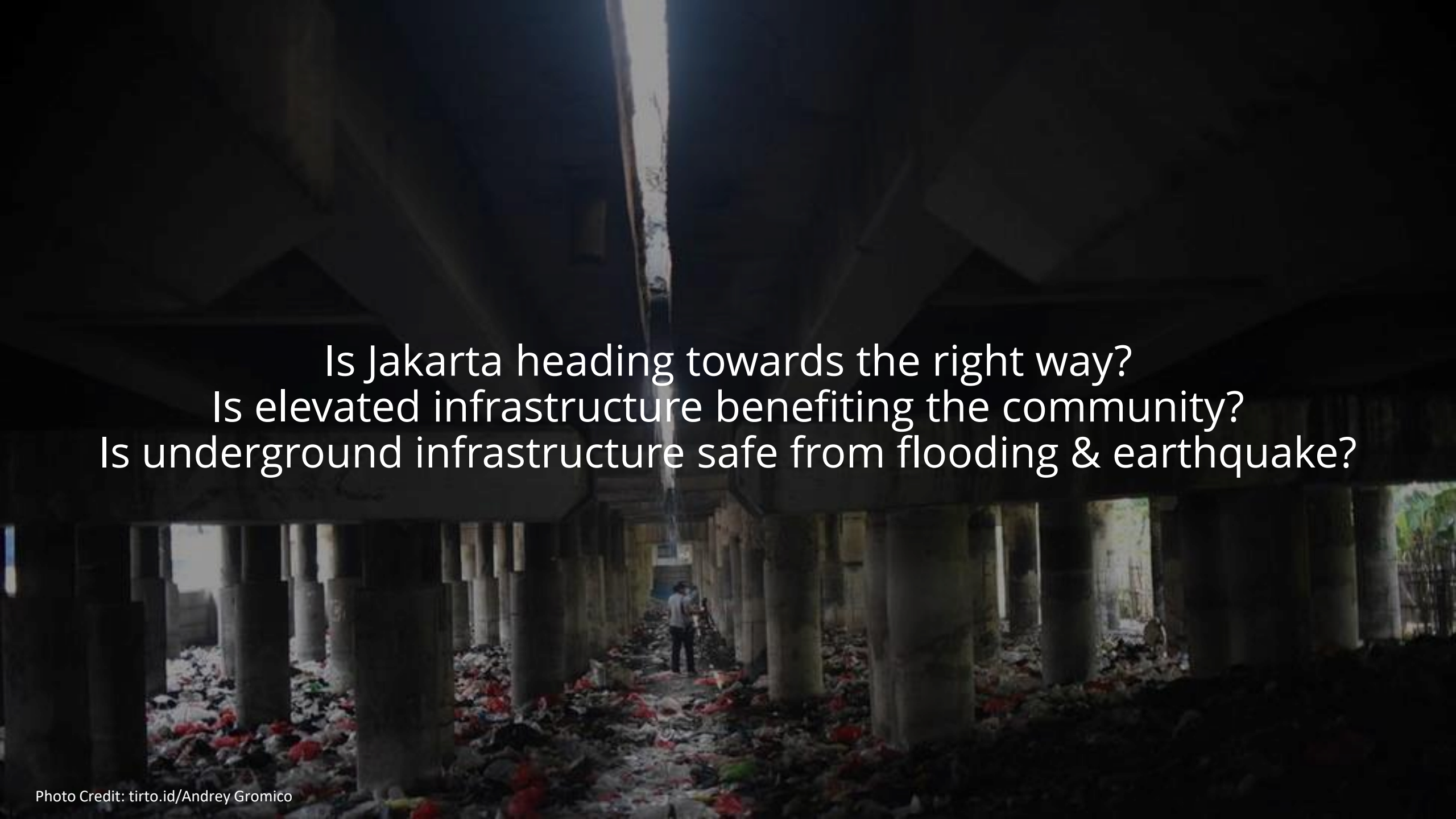




Cities like Paris, London and New York are on the move to revitalise the unused underground spaces while Jakarta starts digging its surface.

A 34-year dream of the country finally becomes a reality when it starts digging the ground in 2013 which then opened the first Indonesia Underground Rail Network in 2019 with the hope to overcome traffic gridlock.



The background image is a photograph of a dark, cluttered space, likely an underpass or a large drainage tunnel. It is supported by numerous concrete pillars. The floor is covered with a thick layer of trash, including many red plastic bags. A person is visible in the distance, standing in the center of the path. The lighting is dim, with some light coming from the far end of the tunnel and from the sides, creating a somber and neglected atmosphere.

Is Jakarta heading towards the right way?  
Is elevated infrastructure benefiting the community?  
Is underground infrastructure safe from flooding & earthquake?





## the spaces created under the elevated

The spaces beneath elevated infrastructures in Jakarta is like a dark and dusty corridors of neglect. It is home for the slums, filled with trash, and quite noisy due to traffic running on the above. These spaces should not just become structures that support the infrastructure, but they should also be an added value for the community and bring aesthetic qualities into the urban fabric.







The quickest way in reclaiming spaces under the elevated is to be tactical.

anything that invites community activities to take place



The project revitalise spaces under the viaduct by creating a green infrastructure which integrated to public open space.

(Boston, MA)



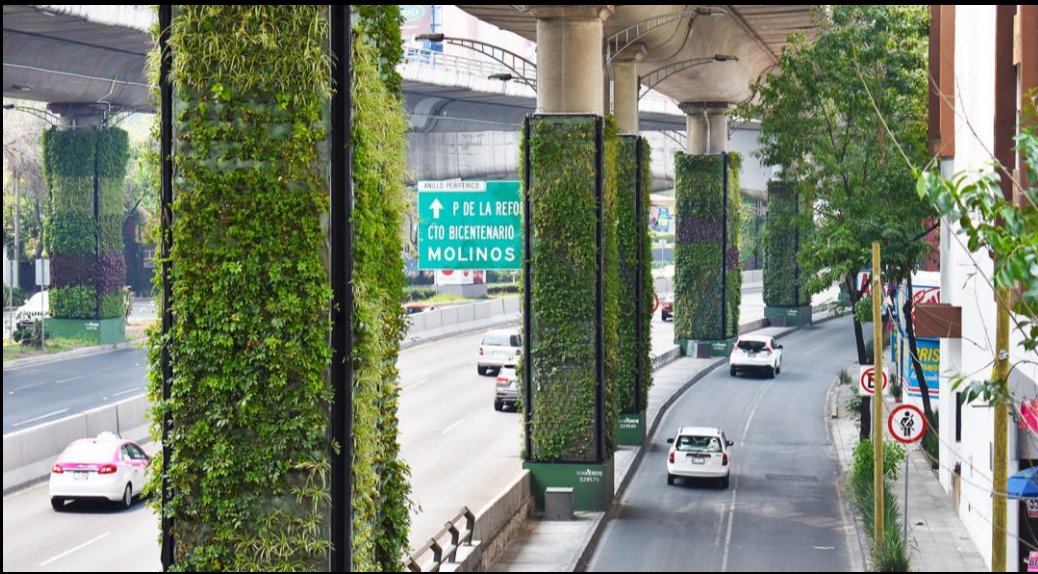




Pet garden in the middle layer between the elevated highway and the underground drainage tunnel.

(Hongkong)





Another example from Mexico on how to design a friendlier & healthier spaces under the elevated which also responding to climate change through the application of vertical gardens and rain harvesting system.  
Via Verde (Mexico)





An effort to improve the space under the railway lines. The space under the elevated become like a mall space that is open and welcoming compared to conventional malls.



Chuo Line Elevated Project (Japan)



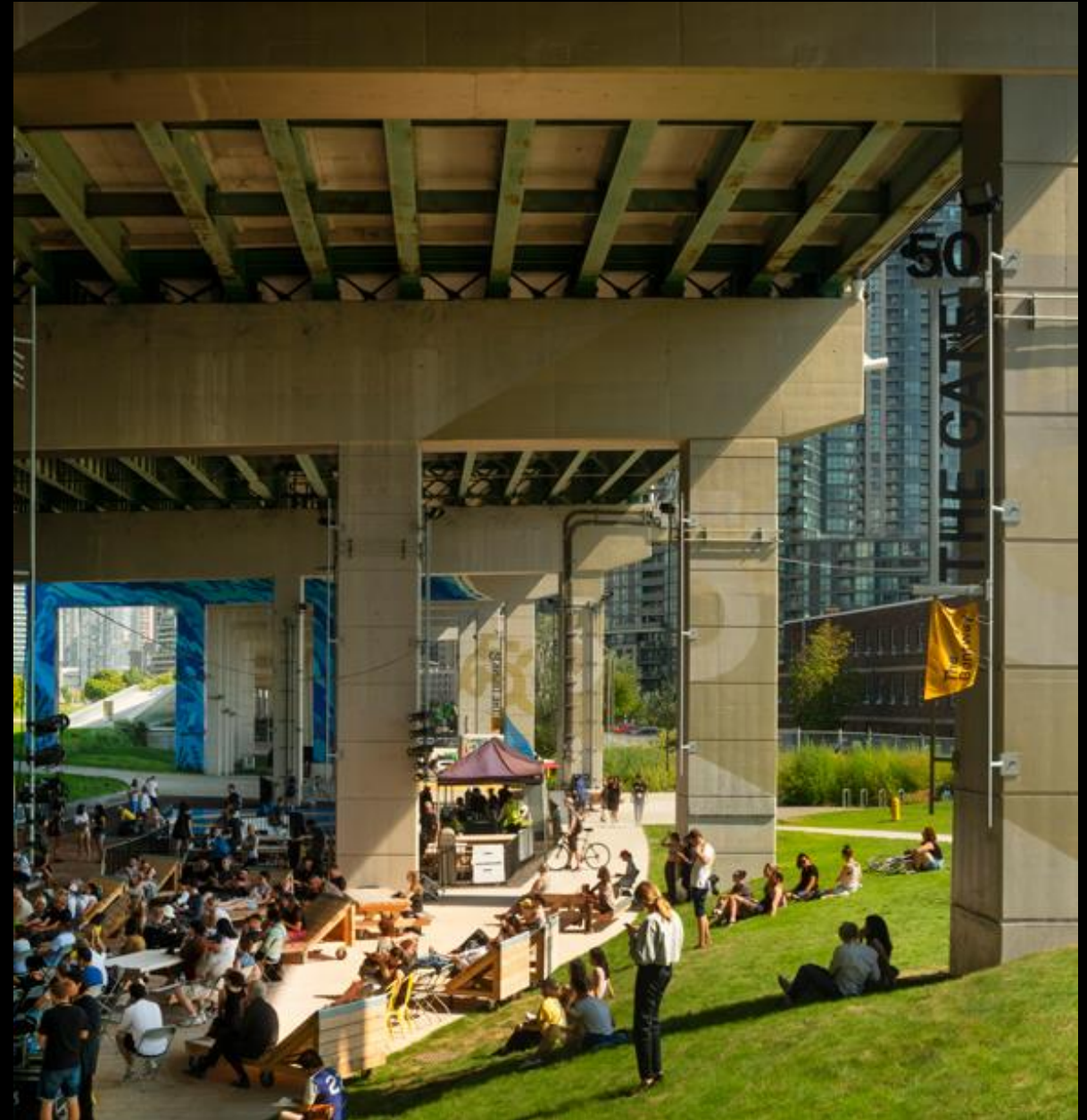


Under the flyover (Mumbai, India)





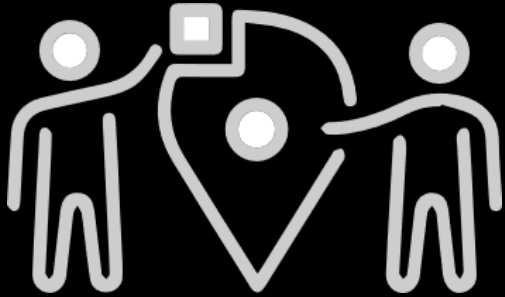
In Toronto, urbanist and landscape architects re-imagine the space under the elevated expressway as the new community-hub in town. The redesigning process includes an extensive public consultation with the existing community and neighborhood towns, which is now become a vibrant public place where visitors can experience a diverse mix of activities and programs.



Under the expressway (Toronto, Canada)



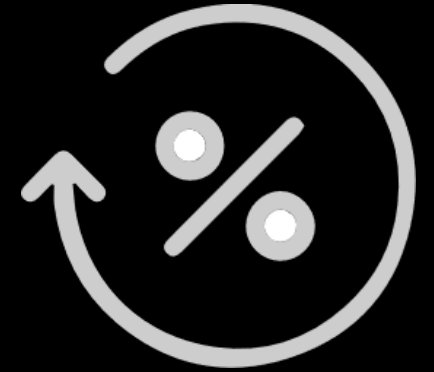
# Strategic Design Intervention



Community-led  
design



Green infrastructure in the mid-layer  
between the elevated and the  
underground



Affordable & low  
maintenance



# Strategic Key Moves





*Cities should create places for the people before it's too late*



In this era of the pandemic, there's an increase demand for a healthy public open space. Reinventing spaces under the elevated for the community can be the solution to fulfil that demand, also to create water retention area to minimise risk of flooding.



# References

Amindoni, A. (2016, 04 01). *MRT Jakarta: Digging the city*. Retrieved from The Jakarta Post: <https://www.thejakartapost.com/longform/2016/04/01/mrt-jakarta-digging-the-city.html>

Barandy, K. (2019, 03 09). *the bentway transforms space under toronto's expressway into a community venue*. Retrieved from Designboom: [https://www.designboom.com/architecture/bentway-toronto-public-work-03-09-19/?fbclid=IwAR025iCCipNs7j\\_\\_m001sEYsHozxWFgarl8rx7XToseSR\\_h5y6d1JYmdSHI](https://www.designboom.com/architecture/bentway-toronto-public-work-03-09-19/?fbclid=IwAR025iCCipNs7j__m001sEYsHozxWFgarl8rx7XToseSR_h5y6d1JYmdSHI)

Bauer, C., Drake, S., Fletcher, R., Travieso, C., & Woodward, D. (2011). *Under the Elevated: Reclaiming Space, Connecting Communities*. New York: Design Trust for Public Space.

Bisaria, A. (2016, June 17). *Mumbai Opens Its First Under-The-Flyover Garden At Matunga And It Looks Pretty Damn Neat*. Retrieved from India Times: <https://www.indiatimes.com/news/india/mumbai-opens-its-first-under-the-flyover-garden-at-matunga-and-it-looks-pretty-damn-neat-256925.html>

Camuti, L. (2015, 09 13). *James Corner Field Operations Will Design Miami's Underline*. Retrieved from THE DIRT Uniting the Built and Natural Environments: <https://dirt.asla.org/2015/09/13/james-corner-field-operations-will-design-miamis-underline/>

Camuti, L. (2015, 06 25). *Under the Highways and Rails, NYC Has 700 Miles of Unused Space*. Retrieved from THE DIRT Uniting the Built and Natural Environments: <https://dirt.asla.org/2015/06/25/under-the-highways-and-rails-nyc-has-700-miles-of-unused-space/>

Centre for Public Impact. (2019, 12 10). *Jakarta's Mass Rapid Transit (MRT)*. Retrieved from Centre for Public Impact: <https://www.centreforpublicimpact.org/case-study/jakartas-mass-rapid-transit-mrt-2011-ongoing>

*Chuo Line Underpass Project Community Station Higashi-Koganei / Mobility Station Higashi-Koganei in Koganei City, Tokyo by Rewrite Development*. (2016, 06 10). Retrieved from Architecture Photo: <http://architecturephoto.net/44076/>

Drainage Services Department. (2013). *Sustainability Report 2013-14*. Hongkong: Drainage Services Department. Retrieved from Drainage Services Department: [https://www.dsd.gov.hk/Documents/SustainabilityReports/1314/en/managing\\_the\\_environment.html](https://www.dsd.gov.hk/Documents/SustainabilityReports/1314/en/managing_the_environment.html)

Gelbard, S. (2015, 01 21). *Design Citizens: professional-grassroots urban tactics*. Retrieved from Spacing: <http://spacing.ca/national/2015/01/21/design-citizens-professional-grassroots-urban-tactics/>

Group, O. B. (n.d.). *What projects are set to improve infrastructure in Indonesia?* Retrieved from Oxford Business Group: <https://oxfordbusinessgroup.com/overview/making-inroads-extensive-portfolio-projects-aims-bridge-country%E2%80%99s-long-standing-infrastructure-gap>

Hansman, H. (2015, 07 17). *Seven Ways to Revamp Deserted Spaces Under New York City's Highways and Elevated Trains*. Retrieved from Smithsonian Magazine: <https://www.smithsonianmag.com/innovation/seven-ways-revamp-deserted-spaces-under-new-york-citys-highways-elevated-trains-180955726/>

Harsono, N. (2021, 01 12). *258 km of toll roads built in Indonesia in 2020, short of target*. Retrieved from The Jakarta Post: <https://www.thejakartapost.com/news/2021/01/12/258-km-of-toll-roads-built-in-indonesia-in-2020-short-of-target.html>

HENDARTO, Y. M. (2021, 06 21). *Kolong Kemiskinan Jakarta Tidak Pernah Sepi*. Retrieved from Kompas: <https://www.kompas.id/baca/metro/2021/06/21/kolong-kemiskinan-jakarta-tidak-pernah-sepi>

Kusumawijaya, M. (2016, 11 21). *Jakarta at 30 million: my city is choking and sinking – it needs a new Plan B*. Retrieved from The Guardian: <https://www.theguardian.com/cities/2016/nov/21/jakarta-indonesia-30-million-sinking-future>

Landing Studio. (2017). *INFRA-SPACE1: UNDERGROUND AT INK BLOCK*. Retrieved from Landing Studio: <http://www.landing-studio.com/infra-space-1>

Makki, M. S. (2020, 11 29). *Semburat Warna Ibu Jakarta*. Retrieved from The Jakarta Post: <https://www.cnnindonesia.com/longform/nasional/20201129/kolong-kota-semburat-warna-ibu-jakarta/index.html>

Mayuri, M. (2018, 08 13). *Jakarta, the Fastest Sinking City in the world*. Retrieved from BBC News: <https://www.bbc.com/news/world-asia-44636934>

Nichols, S. (2019, July 5). *Jakarta, Sinking, And Its Infrastructure*. Retrieved from Habitus Living: <https://www.habitusliving.com/design-hunters/jakarta-sinking-infrastructure>

*PROBLEMS IN JAKARTA*. (n.d.). Retrieved from The Megacity of Jakarta: <https://jakartabeltrami.weebly.com/urban-problems-and-solutions.html>

Promchertcoo, P. (2019, 02 16). *Jakarta takes first step on journey to end traffic nightmare with new MRT*. Retrieved from Channel News Asia: <https://www.channelnewsasia.com/news/asia/jakarta-new-mrt-to-save-indonesia-city-traffic-congestion-11185282>

Safitri, E., & Azzahra, T. A. (2021, 02 28). *Melihat Penampakan Sumur Resapan yang Sudah Dibangun di Cempaka Putih Jakpus*. Retrieved from Detik News: [https://news.detik.com/berita/d-5475462/melihat-penampakan-sumur-resapan-yang-sudah-dibangun-di-cempaka-putih-jakpus?\\_ga=2.82115670.1134965941.1624356468-238962753.1623112836](https://news.detik.com/berita/d-5475462/melihat-penampakan-sumur-resapan-yang-sudah-dibangun-di-cempaka-putih-jakpus?_ga=2.82115670.1134965941.1624356468-238962753.1623112836)

*UNDER THE ELEVATED: PHASE I 2013–2015*. (2015). Retrieved from Design Trust for Public Space: <https://www.designtrust.org/projects/under-elevated/>

*UNDER THE ELEVATED: PHASE II 2015–2020*. (2020). Retrieved from Design Trust for Public Space: <https://www.designtrust.org/projects/under-elevated-phase-ii/>

Via Verde. (n.d.). Retrieved from Via Verde: <http://viaverde.com.mx/v2/>

Walker, A. (2015, 11 20). *These Parks Are Reclaiming Ugly Urban Underpasses as Public Space*. Retrieved from GIZMOD0: <https://gizmodo.com/these-parks-are-reclaiming-ugly-urban-underpasses-as-pu-1743610423>